



SOIL MASTER
AGRICULTURAL MACHINERY

PRODUCT CATALOGUE



SOILMASTER AGRICULTURAL MACHINERY

www.soilmaster.com.tr

soilmaster.com.tr



SOIL MASTER

AGRICULTURAL MACHINERY

HEAD OFFICE & SHOWROOM

FACTORY



SINCE 1974

SOILMASTER AGRICULTURAL
MACHINERY WE ARE
PRODUCER SINCE 1974.

Our company started to get active with the products of agricultural trailer in the sector of Agricultural Equipments and Machines in 1974. The company, which is the initiator of quality both in past and future, has produced agricultural products since the foundation.

It has presented the best service to the consumer by keeping in step with technology, establishing dialogues with farmers and accepting the success as a goal. It is necessary to apply and follow the developing technology in order to reach the world's standards in our century. For that reason, our company has given the required importance to the markets both in internal and external by assimilating the originality in production.

SOILMASTER Agricultural Machines has accepted the principle of providing a complete gladness of customer by producing the most useful equipment and being ready for the duty of service and spare part sale. You will be able to have the opportunity of analysing these products in the internet and communicate with us easily. We want to express our thanks to all of our customer because of their interest.

SOIL MASTER
AGRICULTURAL MACHINERY



**SOIL
PREPARATION**



SOILMASTER AGRICULTURAL MACHINERY





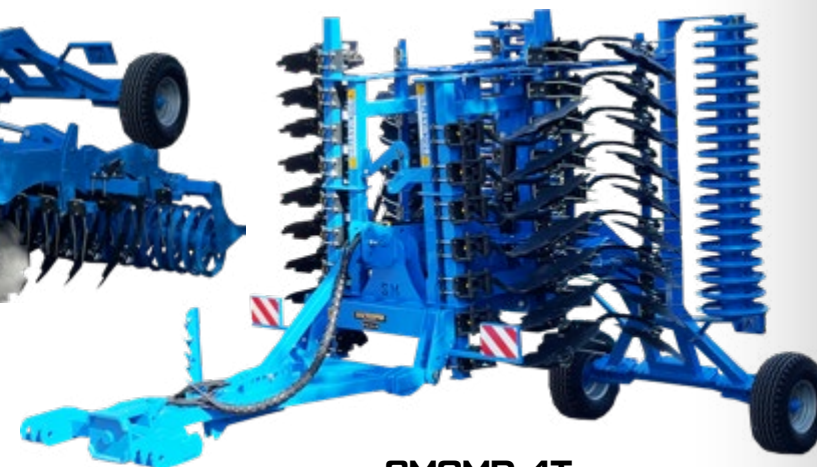
GIANT SERIES FOLDABLE SPRING TYPE MULTI DISC HARROW



SMGMD-4T



SMGMD-4T



SMGMD-4T



SMGMD-6T



SMGMD-6T



SMGMD-6T





GENERAL FEATURES

Its open design with large clearances effectively prevents blockage even when working with high contents of organic matter. The serrated concave discs (570-620 mm diameter), which are supported by maintenance-free angular ball bearings, form the basis for the outstanding quality of work produced by this highly durable implement. The concave disc beams, which are located inside closed pockets and feature robust coil springs to protect them against overloads, ensure precise disc guidance even under difficult conditions. An impact harrow, which can be individually and finely adjusted, is provided behind the two rows of discs for precise deposition of the flow of soil. This improves the distribution of straw when driving at a diagonal angle to the direction of threshing.

TECHNICAL DETAILS

CODE	NUMBER OF DISC	MODEL OF LEG	DISC DIAMETER (CM)	WORKING WIDTH (CM)	WORKING DEPTH (MM)	REQUIRED POWER (HP)
SMGMD-4	32	SPRING	57/62	400	250	140-180
SMGMD-5	40	SPRING	57/62	500	250	175-250
SMGMD-6	48	SPRING	57/62	600	250	210-300

CODE	NUMBER OF DISC	MODEL OF LEG	TYPE OF ROLLER	DISC DIAMETER (CM)	WORKING WIDTH (CM)	WORKING DEPTH (MM)	REQUIRED POWER (HP)
SMGMD-4R	32	SPRING	CAGE TYPE ROLLER	57/62	400	250	140-180
SMGMD-5R	40	SPRING		57/62	500	250	175-250
SMGMD-6R	48	SPRING		57/62	600	250	210-300

CODE	NUMBER OF DISC	MODEL OF LEG	TYPE OF ROLLER	DISC DIAMETER (CM)	WORKING WIDTH (CM)	WORKING DEPTH (MM)	REQUIRED POWER (HP)
SMGMD-4T	32	SPRING	T TYPE ROLLER	57/62	400	250	140-180
SMGMD-5T	40	SPRING		57/62	500	250	175-250
SMGMD-6T	48	SPRING		57/62	600	250	210-300

CODE	NUMBER OF DISC	MODEL OF LEG	TYPE OF ROLLER	DISC DIAMETER (CM)	WORKING WIDTH (CM)	WORKING DEPTH (MM)	REQUIRED POWER (HP)
SMGMD-4D	32	SPRING	DISC TYPE ROLLER	57/62	400	250	140-180
SMGMD-5D	40	SPRING		57/62	500	250	175-250
SMGMD-6D	48	SPRING		57/62	600	250	210-300

GRAND MASTER SERIES FOLDABLE RUBBER TYPE MULTI DISC HARROW



SMRMD-5D



SMRMD-5D



SMRMD-5D





GENERAL FEATURES

Its open design with large clearances effectively prevents blockage even when working with high contents of organic matter. The serrated concave discs (570-620 mm diameter), which are supported by maintenance-free angular ball bearings, form the basis for the outstanding quality of work produced by this highly durable implement. The concave disc beams, which are located inside closed pockets and feature robust rubber to protect them against overloads, ensure precise disc guidance even under difficult conditions. An impact harrow, which can be individually and finely adjusted, is provided behind the two rows of discs for precise deposition of the flow of soil. This improves the distribution of straw when driving at a diagonal angle to the direction of threshing.

TECHNICAL DETAILS

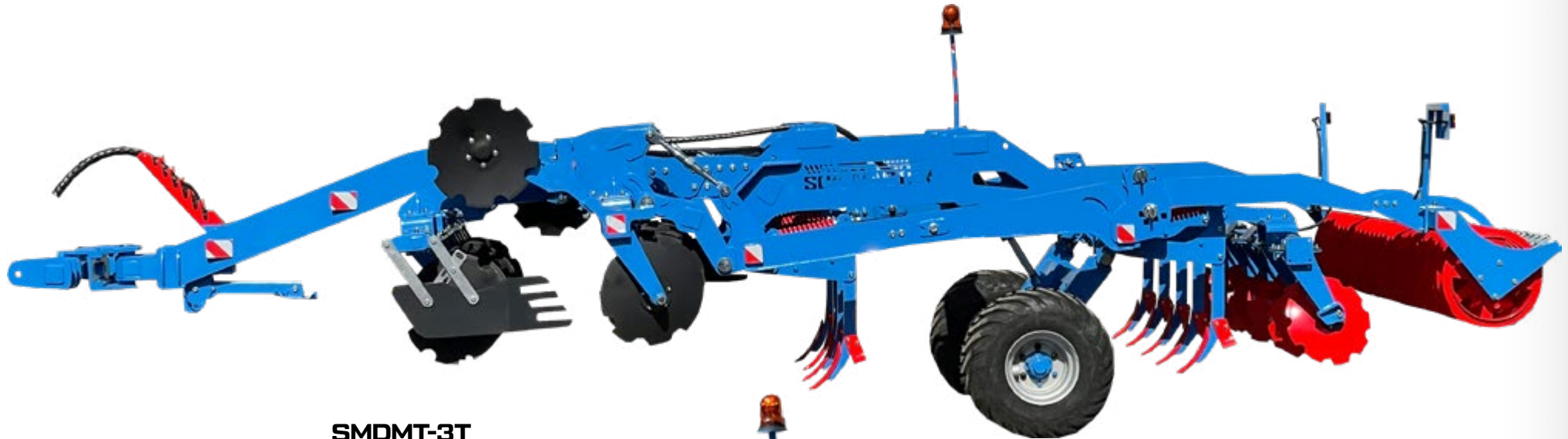
CODE	NUMBER OF DISC	MODEL OF LEG	DISC DIAMETER (CM)	WORKING WIDTH (CM)	WORKING DEPTH (MM)	REQUIRED POWER (HP)
SMRMD-4	32	RUBBER	51/57/62	400	250	140-180
SMRMD-5	40	RUBBER	51/57/62	500	250	175-250
SMRMD-6	48	RUBBER	51/57/62	600	250	210-300

CODE	NUMBER OF DISC	MODEL OF LEG	TYPE OF ROLLER	DISC DIAMETER (CM)	WORKING WIDTH (CM)	WORKING DEPTH (MM)	REQUIRED POWER (HP)
SMRMD-4R	32	RUBBER	CAGE TYPE ROLLER	51/57/62	400	250	140-180
SMRMD-5R	40	RUBBER		51/57/62	500	250	175-250
SMRMD-6R	48	RUBBER		51/57/62	600	250	210-300

CODE	NUMBER OF DISC	MODEL OF LEG	TYPE OF ROLLER	DISC DIAMETER (CM)	WORKING WIDTH (CM)	WORKING DEPTH (MM)	REQUIRED POWER (HP)
SMRMD-4T	32	RUBBER	T TYPE ROLLER	51/57/62	400	250	140-180
SMRMD-5T	40	RUBBER		51/57/62	500	250	175-250
SMRMD-6T	48	RUBBER		51/57/62	600	250	210-300

CODE	NUMBER OF DISC	MODEL OF LEG	TYPE OF ROLLER	DISC DIAMETER (CM)	WORKING WIDTH (CM)	WORKING DEPTH (MM)	REQUIRED POWER (HP)
SMRMD-4D	32	RUBBER	DISC TYPE ROLLER	51/57/62	400	250	140-180
SMRMD-5D	40	RUBBER		51/57/62	500	250	175-250
SMRMD-6D	48	RUBBER		51/57/62	600	250	210-300

DOMINANT SERIES TRAILED TYPE MULTI DISC HARROW & CHISEL PLOUGH WITH T TYPE ROLLER COMBINATION



SMDMT-3T



SMDMT-3T

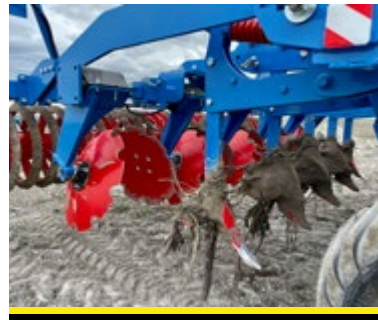


GENERAL FEATURES

Its open design with large clearances effectively prevents blockage even when working with high contents of organic matter. The serrated concave discs (570-620 mm diameter), which are supported by maintenance-free angular ball bearings, form the basis for the outstanding quality of work produced by this highly durable implement. The concave disc beams, which are located inside closed pockets and feature robust rubber to protect them against overloads, ensure precise disc guidance even under difficult conditions. This improves the distribution of straw when driving at a diagonal angle to the direction of threshing. The strong intensive chisel is suited for both the first, shallow stubble cultivation across the full surface after combine harvesting and for subsequent, deeper passes with intensive mixing, or for seedbed preparation for mulch seeding. The depth control in the mounted strong model is easily accessible, and the working depth can be adjusted finely between 5 and 30 cm.

TECHNICAL DETAILS

CODE	NUMBER OF DISC	MODEL OF LEG	TYPE OF ROLLER	DISC DIAMETER (CM)	WORKING WIDTH (CM)	WORKING DEPTH (MM)	REQUIRED POWER (HP)
SMDMT-3R	24	RUBBER	CAGE TYPE ROLLER	57/62	300	250-300	160-220
SMDMT-3T	24	RUBBER	T TYPE ROLLER	57/62	300	250-300	160-220
SMDMT-3D	24	RUBBER	DISC TYPE ROLLER	57/62	300	250-300	160-220



MASTER SERIES SPRING TYPE MULTI DISC HARROW



SMMD-22R



SMMD-22R



SMMD-22R



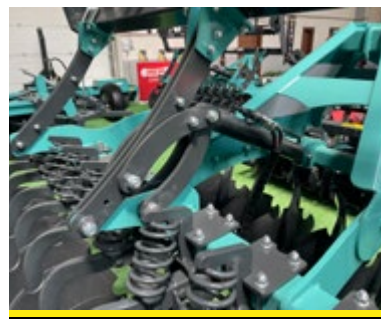
SMMD-22R



SMMD-24T



SMMD-24DT





GENERAL FEATURES

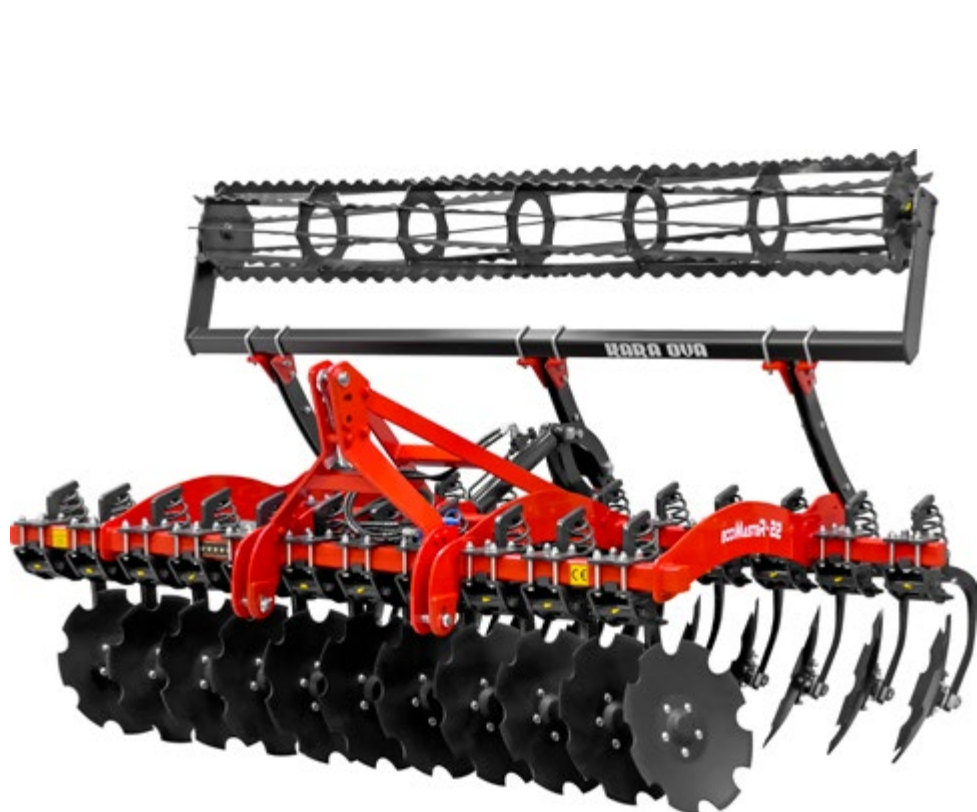
Its open design with large clearances effectively prevents blockage even when working with high contents of organic matter. The serrated concave discs (570-620 mm diameter), which are supported by maintenance-free angular ball bearings, form the basis for the outstanding quality of work produced by this highly durable implement. The concave disc beams, which are located inside closed pockets and feature robust coil springs to protect them against overloads, ensure precise disc guidance even under difficult conditions. An impact harrow, which can be individually and finely adjusted, is provided behind the two rows of discs for precise deposition of the flow of soil. This improves the distribution of straw when driving at a diagonal angle to the direction of threshing.

TECHNICAL DETAILS

CODE	MODEL OF LEG	WEIGHT (KG)		WORKING WIDTH (CM)	WORKING DEPTH (MM)	REQUIRED POWER (HP)
		57Q	62Q			
SMMD-16	SPRING	920	980	200	250	50-60
SMMD-18	SPRING	1030	1100	225	250	60-70
SMMD-20	SPRING	1140	1220	250	250	70-80
SMMD-22	SPRING	1250	1340	275	250	80-90
SMMD-24	SPRING	1365	1465	300	250	90-100
SMMD-26	SPRING	1490	1590	325	250	100-110
SMMD-28	SPRING	1600	1720	350	250	110-130
SMMD-32	SPRING	1820	1950	400	250	130-150

CODE	MODEL OF LEG	TYPE OF ROLLER	WEIGHT (KG)		WORKING WIDTH (CM)	WORKING DEPTH (MM)	REQUIRED POWER (HP)
			57Q	62Q			
SMMD-16R	SPRING	HYDRAULIC FOLDABLE CAGE TYPE ROLLER	1150	1230	200	250	50-60
SMMD-18R	SPRING		1300	1385	225	250	60-70
SMMD-20R	SPRING		1470	1540	250	250	70-80
SMMD-22R	SPRING		1600	1700	275	250	80-90
SMMD-24R	SPRING		1750	1850	300	250	90-100
SMMD-26R	SPRING		1900	2000	325	250	100-110
SMMD-28R	SPRING		2040	2150	350	250	110-130
SMMD-32R	SPRING		2300	2460	400	250	130-150

ECO MASTER SERIES SPRING TYPE MULTI DISC HARROW

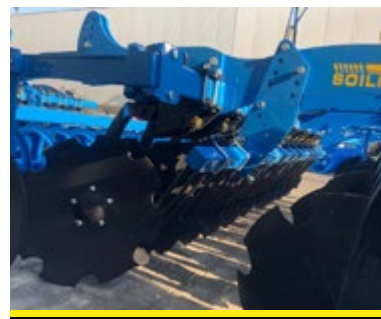


SMEMD-22R



SMEMD-22R

SMEMD-22R





GENERAL FEATURES

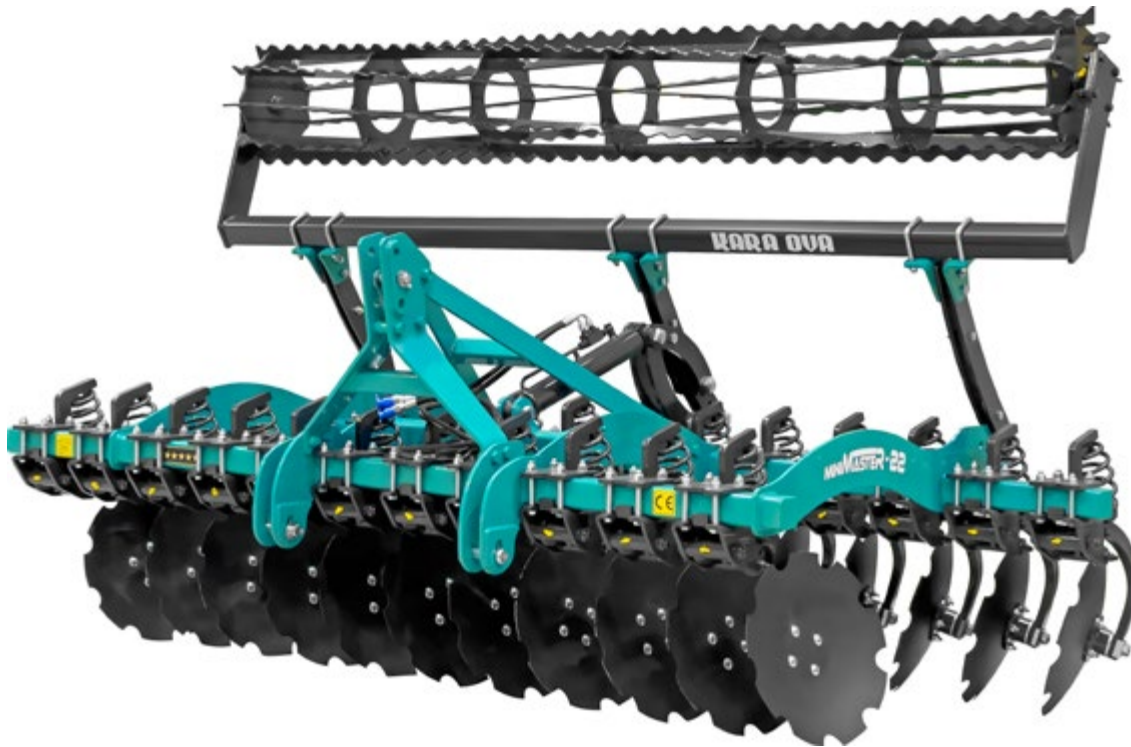
Its open design with large clearances effectively prevents blockage even when working with high contents of organic matter. The serrated concave discs (570-620 mm diameter), which are supported by maintenance-free angular ball bearings, form the basis for the outstanding quality of work produced by this highly durable implement. The concave disc beams, which are located inside closed pockets and feature robust coil springs to protect them against overloads, ensure precise disc guidance even under difficult conditions. An impact harrow, which can be individually and finely adjusted, is provided behind the two rows of discs for precise deposition of the flow of soil. This improves the distribution of straw when driving at a diagonal angle to the direction of threshing.

TECHNICAL DETAILS

CODE	MODEL OF LEG	DISC DIAMETER (CM)	WORKING WIDTH (CM)	WORKING DEPTH (MM)	REQUIRED POWER (HP)
SMEMD-16	SPRING	57/62	200	250	50-60
SMEMD-18	SPRING	57/62	225	250	60-70
SMEMD-20	SPRING	57/62	250	250	70-80
SMEMD-22	SPRING	57/62	275	250	80-90
SMEMD-24	SPRING	57/62	300	250	90-100
SMEMD-26	SPRING	57/62	325	250	100-110
SMEMD-28	SPRING	57/62	350	250	110-130

CODE	MODEL OF LEG	TYPE OF ROLLER	DISC DIAMETER (CM)	WORKING WIDTH (CM)	WORKING DEPTH (MM)	REQUIRED POWER (HP)
SMEMD-16R	SPRING	HYDRAULIC FOLDABLE CAGE TYPE ROLLER	57/62	200	250	50-60
SMEMD-18R	SPRING		57/62	225	250	60-70
SMEMD-20R	SPRING		57/62	250	250	70-80
SMEMD-22R	SPRING		57/62	275	250	80-90
SMEMD-24R	SPRING		57/62	300	250	90-100
SMEMD-26R	SPRING		57/62	325	250	100-110
SMEMD-28R	SPRING		57/62	350	250	110-130

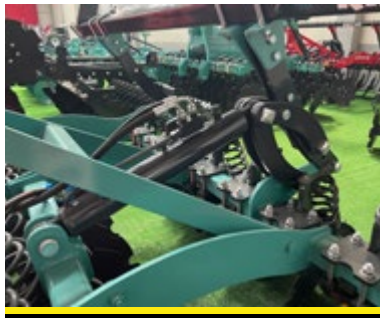
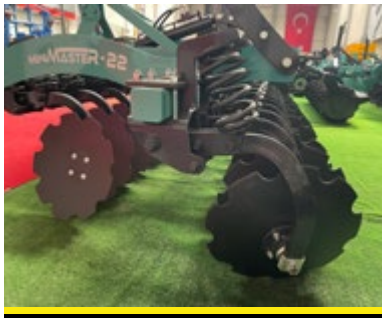
MINI MASTER SERIES SPRING TYPE MULTI DISC HARROW



SMMMD-22R



SMMMD-22R





GENERAL FEATURES

Its open design with large clearances effectively prevents blockage even when working with high contents of organic matter. The serrated concave discs (510 mm diameter), which are supported by maintenance-free angular ball bearings, form the basis for the outstanding quality of work produced by this highly durable implement. The concave disc beams, which are located inside closed pockets and feature robust coil springs to protect them against overloads, ensure precise disc guidance even under difficult conditions. An impact harrow, which can be individually and finely adjusted, is provided behind the two rows of discs for precise deposition of the flow of soil. This improves the distribution of straw when driving at a diagonal angle to the direction of threshing.

TECHNICAL DETAILS

CODE	MODEL OF LEG	DISC DIAMETER (CM)	WORKING WIDTH (CM)	WORKING DEPTH (MM)	REQUIRED POWER (HP)
SMMMD-16	SPRING	51	200	250	45-50
SMMMD-18	SPRING	51	225	250	50-60
SMMMD-20	SPRING	51	250	250	60-70
SMMMD-22	SPRING	51	275	250	70-80
SMMMD-24	SPRING	51	300	250	80-90
SMMMD-26	SPRING	51	325	250	90-100
SMMMD-28	SPRING	51	350	250	100-110

CODE	MODEL OF LEG	TYPE OF ROLLER	DISC DIAMETER (CM)	WORKING WIDTH (CM)	WORKING DEPTH (MM)	REQUIRED POWER (HP)
SMMMD-16R	SPRING	HYDRAULIC FOLDABLE CAGE TYPE ROLLER	51	200	250	45-50
SMMMD-18R	SPRING		51	225	250	50-60
SMMMD-20R	SPRING		51	250	250	60-70
SMMMD-22R	SPRING		51	275	250	70-80
SMMMD-24R	SPRING		51	300	250	80-90
SMMMD-26R	SPRING		51	325	250	90-100
SMMMD-28R	SPRING		51	350	250	100-110

GRAND MASTER SERIES RUBBER TYPE MULTI DISC HARROW



SMRMD-24D



SMRMD-24R



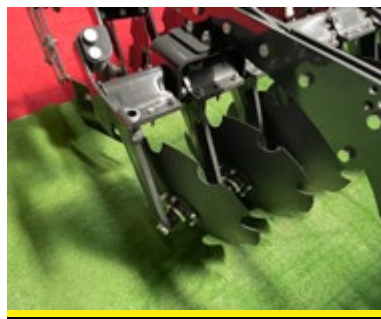
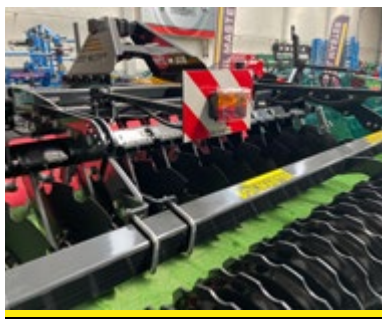
SMRMD-32R



SMRMD-24D



SMRMD-32R





GENERAL FEATURES

Its open design with large clearances effectively prevents blockage even when working with high contents of organic matter. The serrated concave discs (510-570-620 mm diameter), which are supported by maintenance-free angular ball bearings, form the basis for the outstanding quality of work produced by this highly durable implement. The concave disc beams, which are located inside closed pockets and feature robust coil springs to protect them against overloads, ensure precise disc guidance even under difficult conditions. An impact harrow, which can be individually and finely adjusted, is provided behind the two rows of discs for precise deposition of the flow of soil. This improves the distribution of straw when driving at a diagonal angle to the direction of threshing.

TECHNICAL DETAILS

CODE	MODEL OF LEG	DISC DIAMETER (CM)	WORKING WIDTH (CM)	WORKING DEPTH (MM)	REQUIRED POWER (HP)
SMRMD-16	RUBBER	51/57/62	200	250	50-60
SMRMD-18	RUBBER	51/57/62	225	250	60-70
SMRMD-20	RUBBER	51/57/62	250	250	70-80
SMRMD-22	RUBBER	51/57/62	275	250	80-90
SMRMD-24	RUBBER	51/57/62	300	250	90-100
SMRMD-26	RUBBER	51/57/62	325	250	100-110
SMRMD-28	RUBBER	51/57/62	350	250	110-130
SMRMD-32	RUBBER	51/57/62	400	250	120-150

CODE	MODEL OF LEG	TYPE OF ROLLER	DISC DIAMETER (CM)	WORKING WIDTH (CM)	WORKING DEPTH (MM)	REQUIRED POWER (HP)
SMRMD-16R	RUBBER	HYDRAULIC FOLDABLE CAGE TYPE ROLLER	51/57/62	200	250	50-60
SMRMD-18R	RUBBER		51/57/62	225	250	60-70
SMRMD-20R	RUBBER		51/57/62	250	250	70-80
SMRMD-22R	RUBBER		51/57/62	275	250	80-90
SMRMD-24R	RUBBER		51/57/62	300	250	90-100
SMRMD-26R	RUBBER		51/57/62	325	250	100-110
SMRMD-28R	RUBBER		51/57/62	350	250	110-130
SMRMD-32R	RUBBER		51/57/62	400	250	120-150

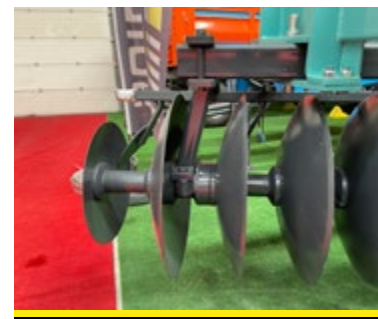
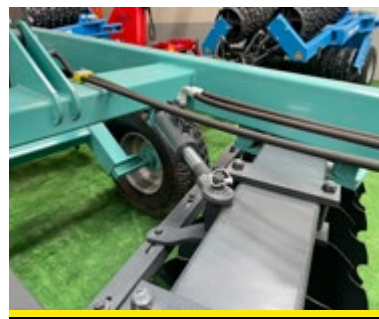
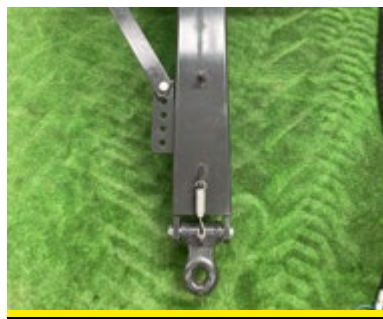
GOBLE DISC HARROW



SMGDH-20



SMGDH-20





GENERAL FEATURES

Heavy Disc Trailed Disc Harrow: These are being manufactured from 16 to 34 discs as fixed chassis. It has more model alternatives such as 22 cm of disc spaces ,560 mm – 610 mm – 660 mm of disc diameters, plain and notched type of discs. These alternatives enable to farmers for choosing the most suitable equipment for their own conditions. The disc direction angle that can be opened to 22 degree gets good soil working and also desired working depth. 2 pieces of land type of tyres with the size 11.5/8-15.3 are used for each machines. It is absolutely a suitable equipment for diminished soil working and minimum soil working .

TECHNICAL DETAILS

CODE	DISC DIAMETER (CM)	WORKING WIDTH (CM)	WEIGHT (KG)	DISC SPACE (MM)	BEARING BED QUANTITY	REQUIRED POWER (HP)
SMGDH-16	56	176	1260	220	6	45-50
SMGDH-18	56	198	1420	220	6	50-55
SMGDH-20	56	220	1575	220	8	65-70
SMGDH-22	56	242	1735	220	8	70-75
SMGDH-24	56	264	1860	220	8	75-80
SMGDH-26	56	286	2045	220	8	80-90
SMGDH-28	56	308	2200	220	8	90-120
SMGDH-30	56	330	2360	220	8	120-140
SMGDH-32	56	352	2520	220	8	150-160
SMGDH-34	56	374	2675	220	8	160-170

CODE	DISC DIAMETER (CM)		WORKING WIDTH (CM)	WEIGHT (KG)		DISC SPACE (MM)	BEARING BED QUANTITY	REQUIRED POWER (HP)
				61Q	66Q			
SMGDH-20	61	66	220	1620	1735	220	8	65-70
SMGDH-22	61	66	242	1800	1930	220	8	70-75
SMGDH-24	61	66	264	1930	2070	220	8	75-80
SMGDH-26	61	66	286	2145	2275	220	8	80-90
SMGDH-28	61	66	308	2290	2455	220	8	90-120
SMGDH-30	61	66	330	2455	2630	220	8	120-140
SMGDH-32	61	66	352	2620	2800	220	8	150-160
SMGDH-34	61	66	374	2780	2980	220	8	160-170

FOLDABLE TYPE GOBLE DISC HARROW



SMFGDH-36

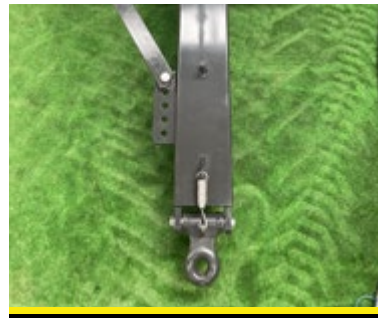
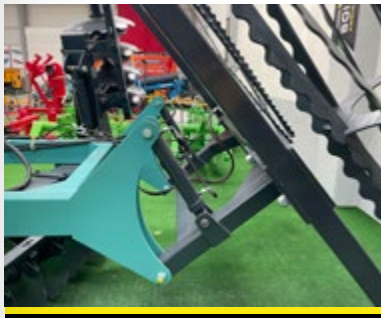
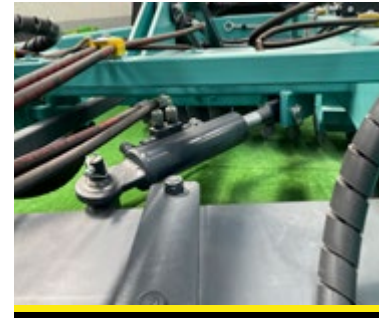
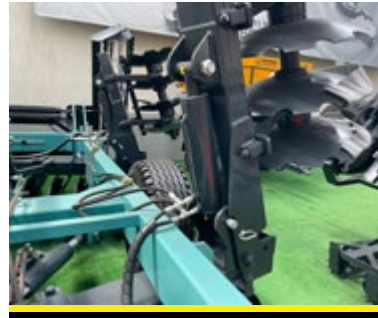


GENERAL FEATURES

Heavy Disc Trailed Disc Harrow: These are being manufactured from 36 to 52 discs as foldable chassis. It has more model alternatives such as 22 cm of disc spaces , 610 mm of disc diameter, plain and notched type of discs. These alternatives enable to farmers for choosing the most suitable equipment for their own conditions. The disc direction angle that can be opened to 22 degree gets good soil working and also desired working depth. 2 pieces of land type of tyres with the size 11.5/8-15.3 are used for each machines. It is absolutely a suitable equipment for diminished soil working and minimum soil working .

TECHNICAL DETAILS

CODE	DISC DIAMETER (CM)	WORKING WIDTH (CM)	WEIGHT (KG)	DISC SPACE (MM)	BEARING BED QUANTITY	REQUIRED POWER (HP)
			66Q			
SMFGDH-36	66	3960	3500	220	16	170-180
SMFGDH-40	66	4400	3900	220	16	180-190
SMFGDH-44	66	4840	4300	220	16	190-200
SMFGDH-48	66	5280	4650	220	16	210-220



HEAVY DUTY DISC HARROW



SMHDD-32

SMHDD-20





GENERAL FEATURES

Our disc harrows are produced with three point linkage system. It is suitable to use as mounted and trailed type according to desire of user. Implement used for soil processing. Also, it is possible to use at the vineyards (between trees) as mounted and at plain soils as trailed. Intended uses are seed bed preparation, smashing the weeds which is not good for the soil, particularly on rainy season.

TECHNICAL DETAILS

CODE	DISC DIAMETER (CM)		DISC SPACE (MM)	BEARING BED QUANTITY	CHASSIS DIMENSION (MM)	WORKING WIDTH (CM)	WEIGHT (KG)		REQUIRED POWER (HP)
							46Q	51Q	
SMHDD-20	46	51	180	6	100 x 100 x 6	180	480	520	45-50
SMHDD-22	46	51	180	6	100 x 100 x 6	198	525	565	50-55
SMHDD-24	46	51	180	8	100 x 100 x 6	216	570	615	55-60
SMHDD-26	46	51	180	8	100 x 100 x 6	234	620	675	60-65
SMHDD-28	46	51	180	8	100 x 100 x 6	252	670	725	65-70
SMHDD-30	46	51	180	8	100 x 100 x 6	270	715	780	70-75
SMHDD-32	46	51	180	8	100 x 100 x 6	288	760	830	75-80
SMHDD-34	46	51	180	12	100 x 100 x 6	306	810	880	80-85
SMHDD-36	46	51	180	12	100 x 100 x 6	324	860	935	85-90
SMHDD-38	46	51	180	12	100 x 100 x 6	342	905	985	90-95
SMHDD-40	46	51	180	12	100 x 100 x 6	360	950	1040	95-100
SMHDD-44	46	51	180	12	100 x 100 x 6	396	1050	1140	100-105
SMHDD-48	46	51	180	12	100 x 100 x 6	432	1145	1245	105-110

CODE	DISC DIAMETER (CM)		DISC SPACE (MM)	BEARING BED QUANTITY	CHASSIS DIMENSION (MM)	WORKING WIDTH (CM)	WEIGHT (KG)		REQUIRED POWER (HP)
							56Q	61Q	
SMHDD-18	56	61	220	6	100 x 200 x 6	198	980	1050	65-70
SMHDD-20	56	61	220	8	100 x 200 x 6	220	1100	1150	70-75
SMHDD-22	56	61	220	8	100 x 200 x 6	242	1200	1250	75-80
SMHDD-24	56	61	220	8	100 x 200 x 6	264	1300	1400	80-90
SMHDD-26	56	61	220	8	100 x 200 x 6	286	1400	1500	90-120
SMHDD-28	56	61	220	8	100 x 200 x 6	308	1550	1600	120-140
SMHDD-30	56	61	220	8	100 x 200 x 6	330	1650	1750	140-160
SMHDD-32	56	61	220	8	100 x 200 x 6	352	1750	1850	160-170
SMHDD-34	56	61	220	8	100 x 200 x 6	374	1850	1950	170-200

MINI TRAILED DISC HARROW



SMMTD-32



SMMTD-32

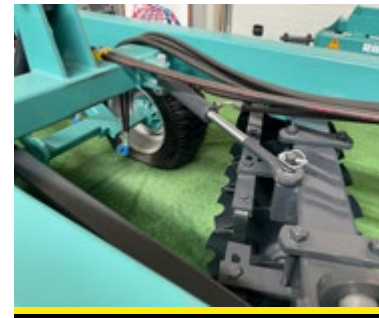
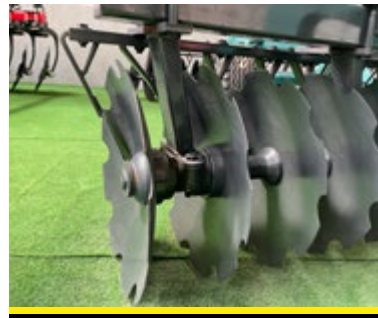
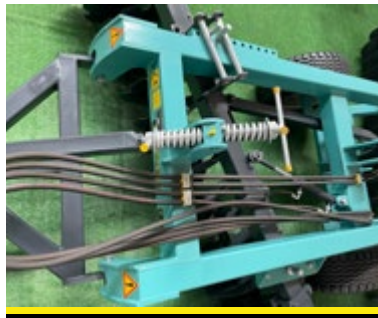


GENERAL FEATURES

Eco Disc, Trailed Type Disc Harrow: These are being manufactured as from 20 to 48 discs. It has more model alternatives such as 18 cm of disc spaces, 460 mm – 510 mm disc diameters, plain and notched type of discs. These alternatives enable to farmers for choosing the most suitable equipment for their own conditions. The disc direction angle that can be opened to 22 degree gets good soil working and also desired working depth. 2 pieces of land type of tyres with the size 10.0/75- 15.3 are used for each machines. It is absolutely a suitable equipment for diminished soil working and minimum soil working .

TECHNICAL DETAILS

CODE	DISC DIAMETER (CM)		DISC SPACE (MM)	WORKING WIDTH (CM)	WEIGHT (KG)		REQUIRED POWER (HP)
					56Q	61Q	
SMMTD-20	46	51	180	180	620	650	45-55
SMMTD-22	46	51	180	198	710	740	55-60
SMMTD-24	46	51	180	216	740	770	60-65
SMMTD-26	46	51	180	234	850	880	65-70
SMMTD-28	46	51	180	252	890	925	70-75
SMMTD-30	46	51	180	270	1000	1050	75-80
SMMTD-32	46	51	180	288	1060	1100	80-85
SMMTD-36	46	51	180	324	1200	1240	85-90
SMMTD-40	46	51	180	360	1320	1375	90-95
SMMTD-44	46	51	180	396	1440	1500	95-100
SMMTD-48	46	51	180	432	1580	1650	100-105



X TYPE TANDEM DISC HARROW



SMTDH-20



SMTDH-24

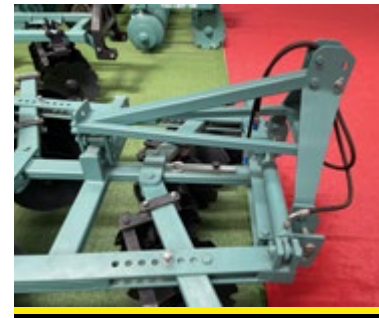


GENERAL FEATURES

This model is x type disc harrow and has the feature to use hydraulic sliding as optional. It is used to mix the seed bed by breaking up the clods after plowing and mixing in the soil. It breaks up the weed residues and weeds in perfect manner. It can be easily drawn up by the three thanks to its travel in the garden agriculture. In this way soil cultivation is made without damaging the tree branches.

TECHNICAL DETAILS

CODE	DISC DIAMETER (CM)		DISC SPACE (MM)	BEARING BED QUANTITY	WORKING WIDTH (CM)	WEIGHT (KG)		REQUIRED POWER (HP)
						46Q	51Q	
SMTDH-16	46	51	180	8	144	384	405	40-45
SMTDH-20	46	51	180	8	180	480	505	45-55
SMTDH-24	46	51	180	8	216	576	605	60-65
SMTDH-28	46	51	180	8	252	672	705	70-75
SMTDH-32	46	51	180	8	288	768	810	80-85
SMTDH-36	46	51	180	8	324	864	910	85-90
SMTDH-40	46	51	180	8	360	960	1010	90-95



DISC PLOUGH



SMDP-3

SMDP-3

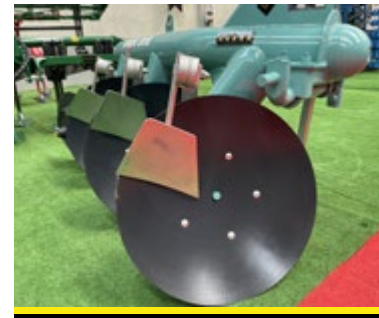


GENERAL FEATURES

Our disc ploughs are being produced with 3-4 and 5 rows in conformity with the current agriculture conditions. The disc ploughs are produced to work in every type of soil by the basic principles such as soil breaking, soil raising, soil turning and soil mixing. Disc ploughs are used for unplowed fields and for processing the stony areas. It avoids the occurrence of the big holes and the upper part of furrow becoming muddy while processing that areas. It can not be stopped up with grass, helves and solid fertilizer. In addition, they can be used easily at rocky and rooted areas. Upon this feature, the damage that may occur in disc ploughs and tractor can be prevented.

TECHNICAL DETAILS

CODE	NUMBER OF DISC	WORKING DEPTH (CM)	WORKING WIDTH (CM)	DISC SPACE (MM)	DISC DIAMETER (MM)	WEIGHT (KG)	REQUIRED POWER (HP)
SMDP-2	2	MAX 25	66	53	660	310	20-40
SMDP-3	3	MAX 25	99	53	660	400	40-60
SMDP-4	4	MAX 25	132	53	660	470	60-80
SMDP-5	5	MAX 25	165	53	660	540	80-100



HORIZONTAL SPRING CULTIVATOR



SMCTH-5



SMCTH-11

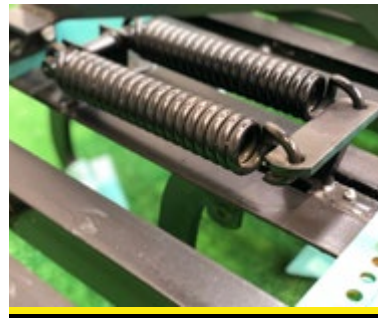


GENERAL FEATURES

These are produced with 5, 7, 9, 11, 13, 15 tines. You can use our cultivator for the secondary dressing of soil, preparing seedbed, loosening the soil, breaking the lumps, cutting wild weed, improving the water distribution and preventing the soil from making sole. Cultivator keeps the moisture in soil, so it does not process the soil by overturning and it hoes rows by adjusting the changeable tine distances.

TECHNICAL DETAILS

CODE	WEIGHT (KG)	TYPE OF SPRING	WORKING DEPTH (CM)	WORKING WIDTH (CM)	REQUIRED POWER (HP)
SMCTH-5	205	HORIZONTAL	MAX 30	130	30-40
SMCTH-7	285	HORIZONTAL	MAX 30	175	40-50
SMCTH-9	365	HORIZONTAL	MAX 30	225	50-60
SMCTH-11	450	HORIZONTAL	MAX 30	275	60-70
SMCTH-13	530	HORIZONTAL	MAX 30	325	70-80
SMCTH-15	610	HORIZONTAL	MAX 30	375	80-90



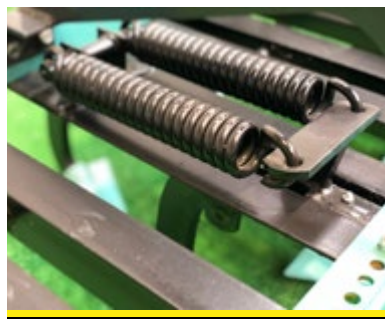
HORIZONTAL SPRING CULTIVATOR WITH ROLLER COMBINATION



SMCTH-11R



SMCTH-11DR





GENERAL FEATURES

These are produced with 5, 7, 9, 11, 13, 15 tines. You can use our cultivator for the secondary dressing of soil, preparing seed bed, loosening the soil, breaking the lumps, cutting wild weed, improving the water distribution and preventing the soil from making sole. Cultivator keeps the moisture in soil, so it does not process the soil by overturning and it hoes rows by adjusting the changeable tine distances.

TECHNICAL DETAILS

CODE	WEIGHT (KG)	TYPE OF SPRING	WORKING DEPTH (CM)	WORKING WIDTH (CM)	TYPE OF ROLLER	REQUIRED POWER (HP)
SMCTH-5R	365	HORIZONTAL	MAX 30	125	SINGLE ROW CAGE ROLLER	30-40
SMCTH-7R	430	HORIZONTAL	MAX 30	170	SINGLE ROW CAGE ROLLER	40-50
SMCTH-9R	495	HORIZONTAL	MAX 30	238	SINGLE ROW CAGE ROLLER	50-60
SMCTH-11R	570	HORIZONTAL	MAX 30	278	SINGLE ROW CAGE ROLLER	60-70
SMCTH-13R	636	HORIZONTAL	MAX 30	330	SINGLE ROW CAGE ROLLER	70-80
SMCTH-15R	700	HORIZONTAL	MAX 30	375	SINGLE ROW CAGE ROLLER	80-90

CODE	WEIGHT (KG)	TYPE OF SPRING	WORKING DEPTH (CM)	WORKING WIDTH (CM)	TYPE OF ROLLER	REQUIRED POWER (HP)
SMCTH-5DR	475	HORIZONTAL	MAX 30	125	DOUBLE ROW CAGE ROLLER	30-40
SMCTH-7DR	560	HORIZONTAL	MAX 30	170	DOUBLE ROW CAGE ROLLER	40-50
SMCTH-9DR	640	HORIZONTAL	MAX 30	238	DOUBLE ROW CAGE ROLLER	50-70
SMCTH-11DR	740	HORIZONTAL	MAX 30	278	DOUBLE ROW CAGE ROLLER	70-80
SMCTH-13DR	820	HORIZONTAL	MAX 30	330	DOUBLE ROW CAGE ROLLER	80-90
SMCTH-15DR	910	HORIZONTAL	MAX 30	375	DOUBLE ROW CAGE ROLLER	90-100

VERTICAL SPRING CULTIVATOR



SMCTV-13

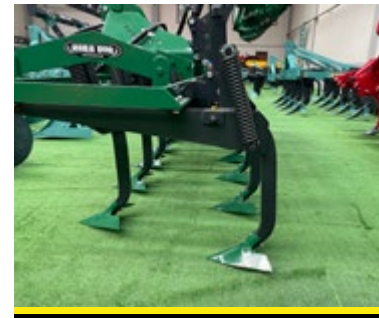
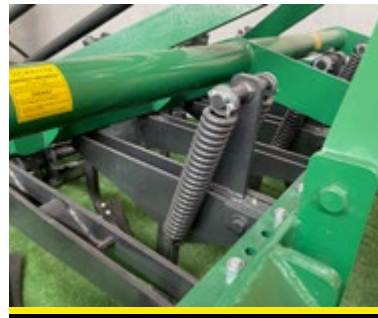


GENERAL FEATURES

These are produced with 5, 7, 9, 11, 13, 15 tines. You can use our cultivator for the secondary dressing of soil, preparing seed bed, loosening the soil, breaking the lumps, cutting wild weed, improving the water distribution and preventing the soil from making sole. Cultivator keeps the moisture in soil, so it does not process the soil by overturning and it hoes rows by adjusting the changeable tine distances.

TECHNICAL DETAILS

CODE	WEIGHT (KG)	TYPE OF SPRING	WORKING DEPTH (CM)	WORKING WIDTH (CM)	REQUIRED POWER (HP)
SMCTV-5	290	VERTICAL	MAX 30	130	30-40
SMCTV-7	410	VERTICAL	MAX 30	175	40-50
SMCTV-9	520	VERTICAL	MAX 30	225	50-60
SMCTV-11	640	VERTICAL	MAX 30	275	60-70
SMCTV-13	740	VERTICAL	MAX 30	325	70-80
SMCTV-15	870	VERTICAL	MAX 30	375	80-90



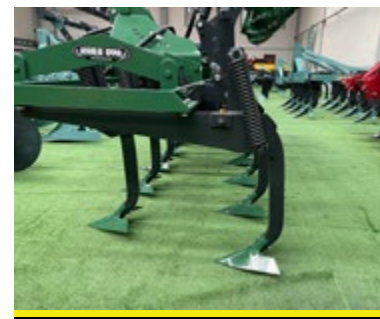
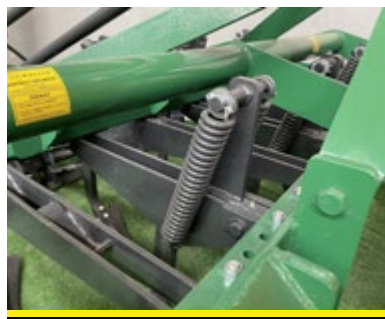
VERTICAL SPRING CULTIVATOR WITH ROLLER COMBINATION



SMCTV-13DR



SMCTV-11DR





GENERAL FEATURES

These are produced with 5, 7, 9, 11, 13, 15 tines. You can use our cultivator for the secondary dressing of soil, preparing seed bed, loosing the soil, breaking the lumps, cutting wild weed, improving the water distribution and preventing the soil from making sole. Cultivator keeps the moisture in soil, so it does not process the soil by overturning and it hoes rows by adjusting the changeable tine distances.

TECHNICAL DETAILS

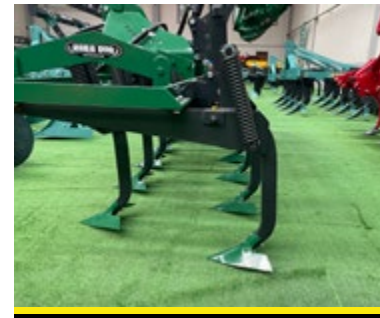
CODE	WEIGHT (KG)	TYPE OF SPRING	WORKING DEPTH (CM)	WORKING WIDTH (CM)	TYPE OF ROLLER	REQUIRED POWER (HP)
SMCTV-5R	440	VERTICAL	MAX 30	125	SINGLE ROW CAGE ROLLER	30-40
SMCTV-7R	510	VERTICAL	MAX 30	170	SINGLE ROW CAGE ROLLER	40-50
SMCTV-9R	620	VERTICAL	MAX 30	238	SINGLE ROW CAGE ROLLER	50-60
SMCTV-11R	740	VERTICAL	MAX 30	278	SINGLE ROW CAGE ROLLER	60-70
SMCTV-13R	855	VERTICAL	MAX 30	330	SINGLE ROW CAGE ROLLER	70-80
SMCTV-15R	970	VERTICAL	MAX 30	375	SINGLE ROW CAGE ROLLER	80-90

CODE	WEIGHT (KG)	TYPE OF SPRING	WORKING DEPTH (CM)	WORKING WIDTH (CM)	TYPE OF ROLLER	REQUIRED POWER (HP)
SMCTV-5DR	550	VERTICAL	MAX 30	125	DOUBLE ROW CAGE ROLLER	30-40
SMCTV-7DR	640	VERTICAL	MAX 30	170	DOUBLE ROW CAGE ROLLER	40-50
SMCTV-9DR	770	VERTICAL	MAX 30	238	DOUBLE ROW CAGE ROLLER	50-70
SMCTV-11DR	910	VERTICAL	MAX 30	278	DOUBLE ROW CAGE ROLLER	70-80
SMCTV-13DR	1040	VERTICAL	MAX 30	330	DOUBLE ROW CAGE ROLLER	80-90
SMCTV-15DR	1180	VERTICAL	MAX 30	375	DOUBLE ROW CAGE ROLLER	90-100

FOLDABLE TYPE VERTICAL SPRING CULTIVATOR



SMCTV-21R





GENERAL FEATURES

You can use our cultivator for the secondary dressing of soil, preparing seedbed, loosening the soil, breaking the lumps, cutting wild weed, improving the water distribution and preventing the soil from making sole. Cultivator keeps the moisture in soil, so it does not process the soil by overturning and it hoes rows by adjusting the changeable tine distances.

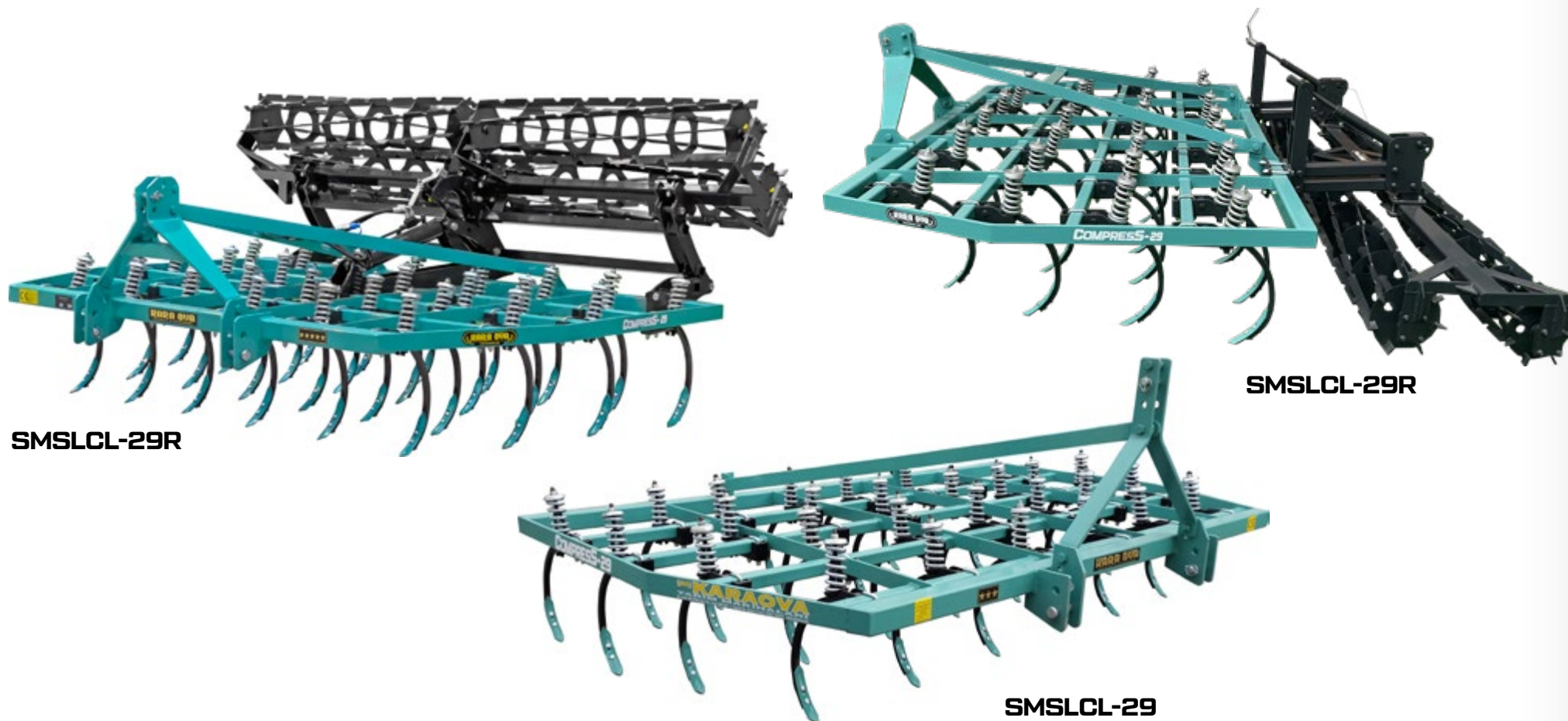
TECHNICAL DETAILS

CODE	TYPE OF SPRING	TYPE OF CHASSIS	NUMBER OF LEG	WORKING WIDTH (CM)	WORKING DEPTH (CM)	REQUIRED POWER (HP)
SMCTV-15	VERTICAL	FOLDABLE	15	375	MAX 30	100-110
SMCTV-17	VERTICAL	FOLDABLE	17	425	MAX 30	110-130
SMCTV-19	VERTICAL	FOLDABLE	19	475	MAX 30	130-150
SMCTV-21	VERTICAL	FOLDABLE	21	525	MAX 30	150-170
SMCTV-23	VERTICAL	FOLDABLE	23	575	MAX 30	160-180
SMCTV-25	VERTICAL	FOLDABLE	25	625	MAX 30	170-190
SMCTV-27	VERTICAL	FOLDABLE	27	675	MAX 30	190-220
SMCTV-29	VERTICAL	FOLDABLE	29	725	MAX 30	220-240

CODE	TYPE OF SPRING	TYPE OF CHASSIS	TYPE OF ROLLER	NUMBER OF LEG	WORKING WIDTH (CM)	WORKING DEPTH (CM)	REQUIRED POWER (HP)
SMCTV-15R	VERTICAL	FOLDABLE	SINGLE ROW CAGE ROLLER	15	375	MAX 30	100-110
SMCTV-17R	VERTICAL	FOLDABLE	SINGLE ROW CAGE ROLLER	17	425	MAX 30	110-130
SMCTV-19R	VERTICAL	FOLDABLE	SINGLE ROW CAGE ROLLER	19	475	MAX 30	130-150
SMCTV-21R	VERTICAL	FOLDABLE	SINGLE ROW CAGE ROLLER	21	525	MAX 30	150-170
SMCTV-23R	VERTICAL	FOLDABLE	SINGLE ROW CAGE ROLLER	23	575	MAX 30	160-180
SMCTV-25R	VERTICAL	FOLDABLE	SINGLE ROW CAGE ROLLER	25	625	MAX 30	170-190
SMCTV-27R	VERTICAL	FOLDABLE	SINGLE ROW CAGE ROLLER	27	675	MAX 30	190-220
SMCTV-29R	VERTICAL	FOLDABLE	SINGLE ROW CAGE ROLLER	29	725	MAX 30	220-240

CODE	TYPE OF SPRING	TYPE OF CHASSIS	TYPE OF ROLLER	NUMBER OF LEG	WORKING WIDTH (CM)	WORKING DEPTH (CM)	REQUIRED POWER (HP)
SMCTV-15DR	VERTICAL	FOLDABLE	DOUBLE ROW CAGE ROLLER	15	375	MAX 30	100-110
SMCTV-17DR	VERTICAL	FOLDABLE	DOUBLE ROW CAGE ROLLER	17	425	MAX 30	110-130
SMCTV-19DR	VERTICAL	FOLDABLE	DOUBLE ROW CAGE ROLLER	19	475	MAX 30	130-150
SMCTV-21DR	VERTICAL	FOLDABLE	DOUBLE ROW CAGE ROLLER	21	525	MAX 30	150-170
SMCTV-23DR	VERTICAL	FOLDABLE	DOUBLE ROW CAGE ROLLER	23	575	MAX 30	160-180
SMCTV-25DR	VERTICAL	FOLDABLE	DOUBLE ROW CAGE ROLLER	25	625	MAX 30	170-190
SMCTV-27DR	VERTICAL	FOLDABLE	DOUBLE ROW CAGE ROLLER	27	675	MAX 30	190-220
SMCTV-29DR	VERTICAL	FOLDABLE	DOUBLE ROW CAGE ROLLER	29	725	MAX 30	220-240

SPRING LOADED CULTIVATOR COMBINATION





GENERAL FEATURES

It is manufactured as 17, 19, 21, 23, 25, 27, 29, 31, 33, 35 legs in regular type with optional double row rotating harrow combination. It saves both time and fuel. It provides convenience in terms of transportation with its foldable feature. It dilates soil by ripping and let soil be aired. Rotating harrow combination levels the soil which the cultivator cultivates by pushing. It prepares a perfect seed bed and minimizes the seed casualty.

TECHNICAL DETAILS

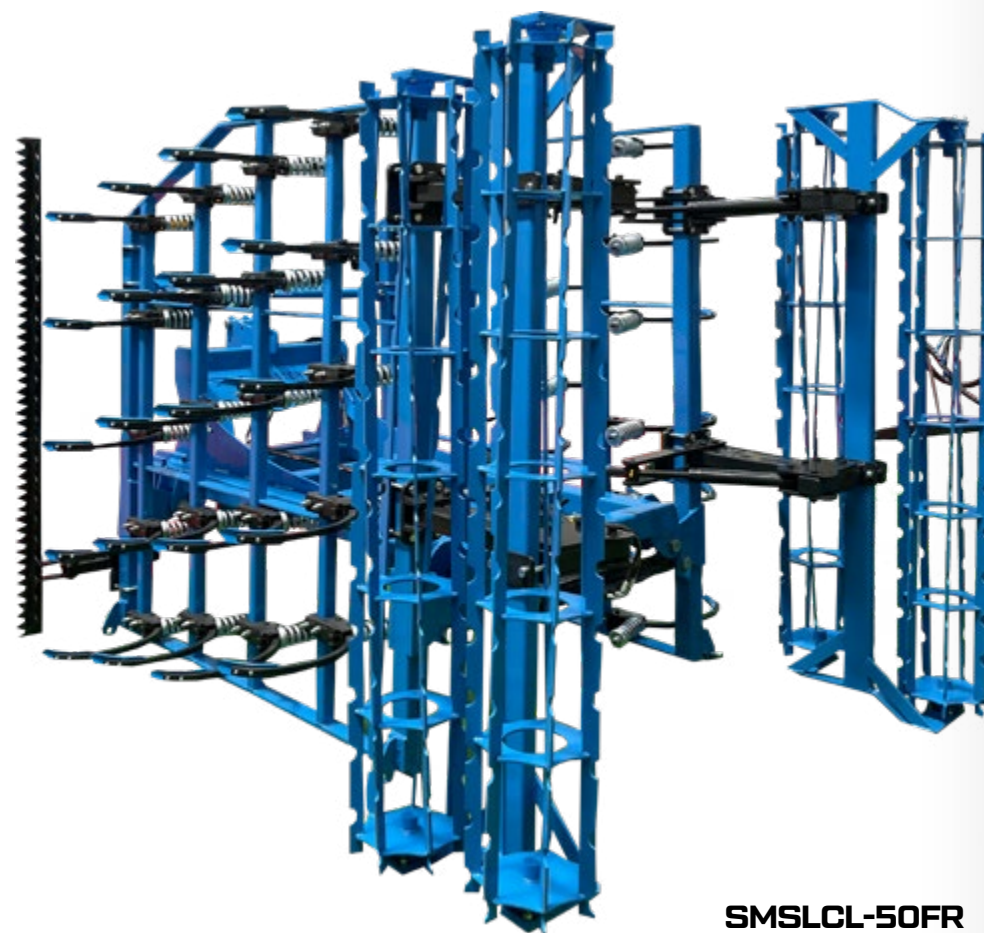
CODE	TYPE OF CHASSIS	TRANSPORT WIDTH (CM)	WORKING WIDTH (CM)	LEG SPACE (CM)	WORKING SPEED (KM/H)	WEIGHT (KG)	REQUIRED POWER (HP)
SMSLCL-17	FIXED	175	170	10-11	6-8	265	30-40
SMSLCL-19	FIXED	195	190	10-11	6-8	295	40-50
SMSLCL-21	FIXED	215	210	10-11	6-8	325	50-60
SMSLCL-23	FIXED	235	230	10-11	6-8	355	55-65
SMSLCL-25	FIXED	255	250	10-11	6-8	385	60-70
SMSLCL-27	FIXED	275	270	10-11	6-8	420	65-75
SMSLCL-29	FIXED	295	290	10-11	6-8	450	70-80
SMSLCL-31	FIXED	315	310	10-11	6-8	470	80-90
SMSLCL-33	FIXED	335	330	10-11	6-8	510	85-95
SMSLCL-35	FIXED	355	350	10-11	6-8	550	90-100

CODE	TYPE OF CHASSIS	TYPE OF ROLLER	TRANSPORT WIDTH (CM)	WORKING WIDTH (CM)	LEG SPACE (CM)	WORKING SPEED (KM/H)	WEIGHT (KG)	REQUIRED POWER (HP)
SMSLCL-17R	FIXED	DOUBLE ROW CAGE ROLLER	200	170	10-11	6-8	530	30-40
SMSLCL-19R	FIXED	DOUBLE ROW CAGE ROLLER	220	190	10-11	6-8	600	40-50
SMSLCL-21R	FIXED	DOUBLE ROW CAGE ROLLER	240	210	10-11	6-8	660	50-60
SMSLCL-23R	FIXED	DOUBLE ROW CAGE ROLLER	260	230	10-11	6-8	725	55-65
SMSLCL-25R	FIXED	DOUBLE ROW CAGE ROLLER	270	250	10-11	6-8	785	60-70
SMSLCL-27R	FIXED	DOUBLE ROW CAGE ROLLER	280	270	10-11	6-8	850	65-75
SMSLCL-29R	FIXED	DOUBLE ROW CAGE ROLLER	320	290	10-11	6-8	910	70-80
SMSLCL-31R	FIXED	DOUBLE ROW CAGE ROLLER	330	310	10-11	6-8	975	80-90
SMSLCL-33R	FIXED	DOUBLE ROW CAGE ROLLER	360	330	10-11	6-8	1040	85-95
SMSLCL-35R	FIXED	DOUBLE ROW CAGE ROLLER	380	350	10-11	6-8	1100	90-100

FOLDABLE TYPE SPRING LOADED CULTIVATOR COMBINATION (2-WING)



SMSLCL-50FR



SMSLCL-50FR



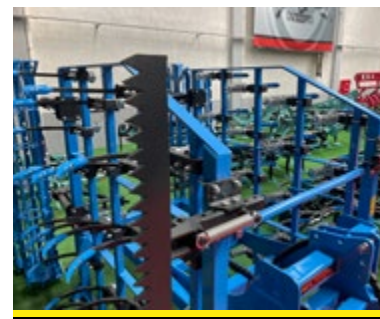
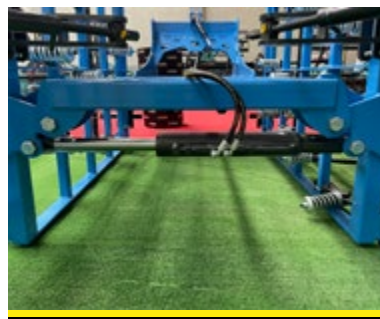
GENERAL FEATURES

It is manufactured as 35, 40, 45, 50 legs in foldable type with optional double row rotating harrow combination. It saves both time and fuel. It provides convenience in terms of transportation with its foldable feature. It dilates soil by ripping and let soil be aired. Rotating harrow combination levels the soil which the cultivator cultivates by pushing. It prepares a perfect seed bed and minimizes the seed casualty.

TECHNICAL DETAILS

CODE	TYPE OF CHASSIS	WORKING WIDTH (CM)	LEG SPACE (CM)	WORKING SPEED (KM/H)	REQUIRED POWER (HP)
SMSLCL-35F	MOUNTED / FOLDABLE / 2 WING / FRONT LEVELER	350	10-11	6-8	90-100
SMSLCL-40F	MOUNTED / FOLDABLE / 2 WING / FRONT LEVELER	400	10-11	6-8	100-110
SMSLCL-45F	MOUNTED / FOLDABLE / 2 WING / FRONT LEVELER	450	10-11	6-8	110-120
SMSLCL-50F	MOUNTED / FOLDABLE / 2 WING / FRONT LEVELER	500	10-11	6-8	120-140

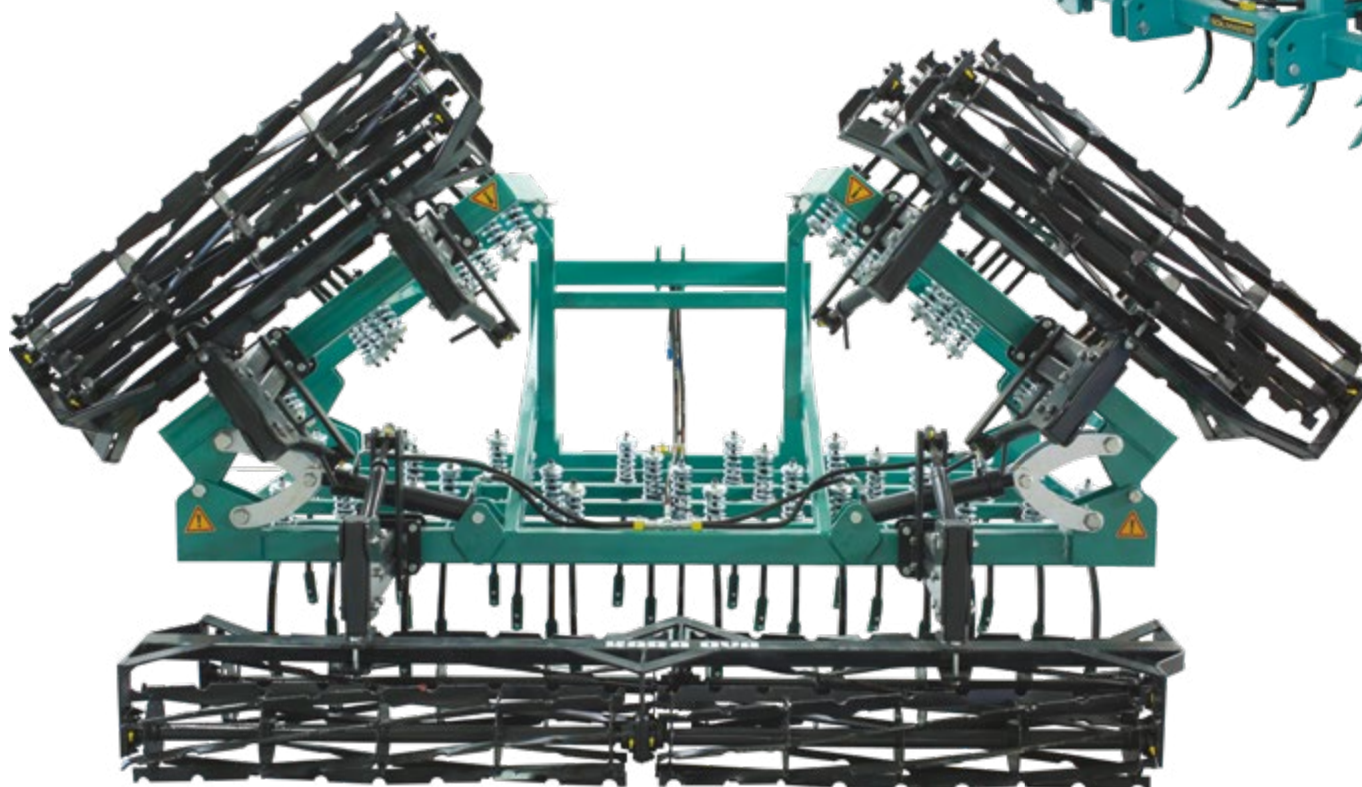
CODE	TYPE OF CHASSIS	TYPE OF ROLLER	WORKING WIDTH (CM)	LEG SPACE (CM)	WORKING SPEED (KM/H)	REQUIRED POWER (HP)
SMSLCL-35FR	MOUNTED / FOLDABLE / 2 WING / FRONT LEVELER	DOUBLE ROW CAGE ROLLER	350	10-11	6-8	90-100
SMSLCL-40FR	MOUNTED / FOLDABLE / 2 WING / FRONT LEVELER	DOUBLE ROW CAGE ROLLER	400	10-11	6-8	100-110
SMSLCL-45FR	MOUNTED / FOLDABLE / 2 WING / FRONT LEVELER	DOUBLE ROW CAGE ROLLER	450	10-11	6-8	110-120
SMSLCL-50FR	MOUNTED / FOLDABLE / 2 WING / FRONT LEVELER	DOUBLE ROW CAGE ROLLER	500	10-11	6-8	120-140



FOLDABLE TYPE SPRING LOADED CULTIVATOR COMBINATION (3-WING)



SMSLCL-45FR



SMSLCL-45FR



GENERAL FEATURES

It is manufactured as 35, 40, 45, 50 legs in foldable type with optional double row rotating harrow combination. It saves both time and fuel. It provides convenience in terms of transportation with its foldable feature. It dilates soil by ripping and let soil be aired. Rotating harrow combination levels the soil which the cultivator cultivates by pushing. It prepares a perfect seed bed and minimizes the seed casualty.

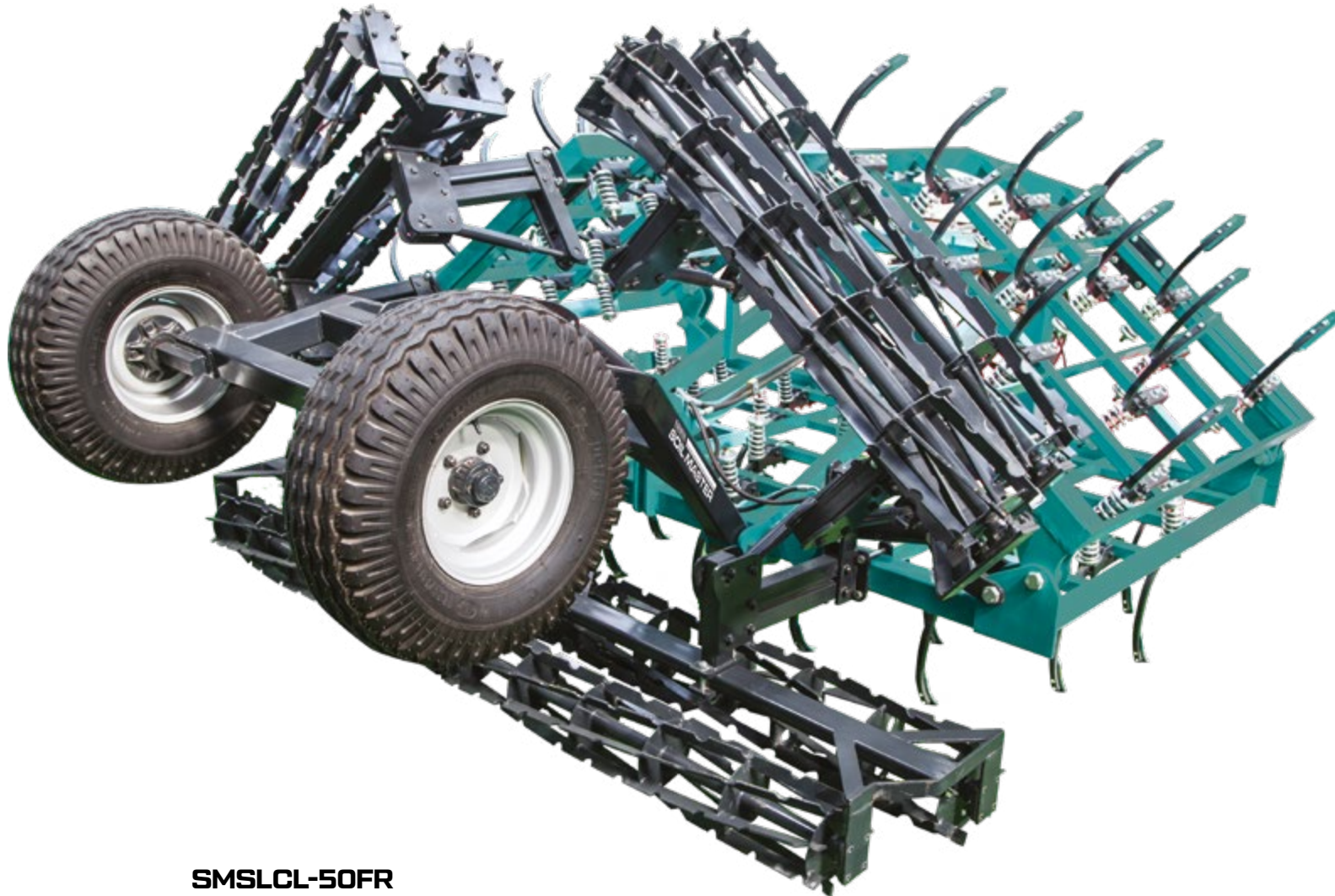
TECHNICAL DETAILS

CODE	TYPE OF CHASSIS	WORKING WIDTH (CM)	LEG SPACE (CM)	WORKING SPEED (KM/H)	WEIGHT (KG)	REQUIRED POWER (HP)
SMSLCL-35F	MOUNTED / FOLDABLE / 3 WING	350	10-11	6-8	570	90-100
SMSLCL-40F	MOUNTED / FOLDABLE / 3 WING	400	10-11	6-8	650	100-110
SMSLCL-45F	MOUNTED / FOLDABLE / 3 WING	450	10-11	6-8	720	110-120
SMSLCL-50F	MOUNTED / FOLDABLE / 3 WING	500	10-11	6-8	800	120-140

CODE	TYPE OF CHASSIS	TYPE OF ROLLER	WORKING WIDTH (CM)	LEG SPACE (CM)	WORKING SPEED (KM/H)	WEIGHT (KG)	REQUIRED POWER (HP)
SMSLCL-35FR	MOUNTED / FOLDABLE / 3 WING	DOUBLE ROW CAGE ROLLER	350	10-11	6-8	1130	90-100
SMSLCL-40FR	MOUNTED / FOLDABLE / 3 WING	DOUBLE ROW CAGE ROLLER	400	10-11	6-8	1280	100-110
SMSLCL-45FR	MOUNTED / FOLDABLE / 3 WING	DOUBLE ROW CAGE ROLLER	450	10-11	6-8	1450	110-120
SMSLCL-50FR	MOUNTED / FOLDABLE / 3 WING	DOUBLE ROW CAGE ROLLER	500	10-11	6-8	1600	120-140



FOLDABLE TRAILED TYPE SPRING LOADED CULTIVATOR COMBINATION (3-WING)



SMSLCL-50FR



GENERAL FEATURES

It is manufactured as 35, 40, 45, 50 legs in foldable type with optional double row rotating harrow combination. It saves both time and fuel. It provides convenience in terms of transportation with its foldable feature. It dilates soil by ripping and let soil be aired. Rotating harrow combination levels the soil which the cultivator cultivates by pushing. It prepares a perfect seed bed and minimizes the seed casualty.

TECHNICAL DETAILS

CODE	TYPE OF CHASSIS	WORKING WIDTH (CM)	LEG SPACE (CM)	WORKING SPEED (KM/H)	REQUIRED POWER (HP)
SMSLCL-35F	TRAILED / FOLDABLE / 3 WING	350	10-11	6-8	90-100
SMSLCL-40F	TRAILED / FOLDABLE / 3 WING	400	10-11	6-8	100-110
SMSLCL-45F	TRAILED / FOLDABLE / 3 WING	450	10-11	6-8	110-120
SMSLCL-50F	TRAILED / FOLDABLE / 3 WING	500	10-11	6-8	120-140

CODE	TYPE OF CHASSIS	TYPE OF ROLLER	WORKING WIDTH (CM)	LEG SPACE (CM)	WORKING SPEED (KM/H)	REQUIRED POWER (HP)
SMSLCL-35FR	TRAILED / FOLDABLE / 3 WING	DOUBLE ROW CAGE ROLLER	350	10-11	6-8	90-100
SMSLCL-40FR	TRAILED / FOLDABLE / 3 WING	DOUBLE ROW CAGE ROLLER	400	10-11	6-8	100-110
SMSLCL-45FR	TRAILED / FOLDABLE / 3 WING	DOUBLE ROW CAGE ROLLER	450	10-11	6-8	110-120
SMSLCL-50FR	TRAILED / FOLDABLE / 3 WING	DOUBLE ROW CAGE ROLLER	500	10-11	6-8	120-140



BEST SERIES SPRING LOADED CULTIVATOR



SMLS-2-13R



SMLS-2-13





GENERAL FEATURES

It is manufactured as 7, 9, 11, 13, 15, 17 legs with double row and as 11, 13, 16, 17, 19 legs with 3-row with optional toothed rotating harrow combination. While breaking the stubble, it cultivates the soil without turning it over. In heavy soil, it cultivates the soil up to 250 mm depth. Distance between the legs can be fixed. The legs are made of high quality spring-steel and can stretch up to 60 mm. Due to having a 70 cm working height, it can't be blocked by stalks, weeds ext. during cultivation. It can't make a tough layer under the soil and it doesn't release the soil moisture since it doesn't turn over the soil during cultivation. It stores the minerals and oxygen because it works by vibrating. It raises the crops fruitfulness Rotating harrow combination levels the soil which the cultivator cultivates by pushing. It prepares a perfect seed bed and minimizes the seed casualty.

TECHNICAL DETAILS

CODE	NUMBER OF LEG	NUMBER OF ROW	WORKING WIDTH (CM)	WORKING SPEED (KM/H)	REQUIRED POWER (HP)
SMSL-2-7	7	2	205	5.5-9	50-60
SMSL-2-9	9	2	265	5.5-9	60-70
SMSL-2-11	11	2	305	5.5-9	70-80
SMSL-2-13	13	2	345	5.5-9	80-90
SMSL-2-15	15	2	395	5.5-9	90-100
SMSL-2-17	17	2	440	5.5-9	100-120

CODE	NUMBER OF LEG	NUMBER OF ROW	WORKING WIDTH (CM)	WORKING SPEED (KM/H)	REQUIRED POWER (HP)
SMSL-3-11	11	3	281	5.5-9	70-80
SMSL-3-13	13	3	337	5.5-9	80-90
SMSL-3-16	16	3	390	5.5-9	90-100
SMSL-3-17	17	3	430	5.5-9	100-120
SMSL-3-19	19	3	481	5.5-9	120-140

FOLDABLE TYPE BEST SERIES SPRING LOADED CULTIVATOR



SMSL-3-21R



SMSL-3-21R



GENERAL FEATURES

It is manufactured as 17,19,21,23,25,27,29 legs with 3-row with optional roller combination. While breaking the stubble, it cultivates the soil without turning it over. In heavy soil, it cultivates the soil up to 250 mm depth. Distance between the legs can be fixed. The legs are made of high quality spring-steel and can stretch up to 60 mm. Due to having a 70 cm working height, it can't be blocked by stalks, weeds ext. during cultivation. It can't make a tough layer under the soil and it doesn't release the soil moisture since it doesn't turn over the soil during cultivation. It stores the minerals and oxygen because it works by vibrating. It raises the crops fruitfulness Rotating harrow combination levels the soil which the cultivator cultivates by pushing. It prepares a perfect seed bed and minimizes the seed casualty.

TECHNICAL DETAILS

CODE	NUMBER OF LEG	NUMBER OF ROW	WORKING WIDTH (CM)	WORKING SPEED (KM/H)	REQUIRED POWER (HP)
SMSL-3-17	17	3	430	5.5-9	120-140
SMSL-3-19	19	3	480	5.5-9	140-160
SMSL-3-21	21	3	535	5.5-9	160-180
SMSL-3-23	23	3	585	5.5-9	180-200
SMSL-3-25	25	3	640	5.5-9	200-220
SMSL-3-27	27	3	695	5.5-9	220-240
SMSL-3-29	29	3	745	5.5-9	240-260



SPRING LOADED CHISEL PLOUGH



SMSLC-2-9



SMSLC-3-13R





GENERAL FEATURES

The strong intensive chisel is suited for both the first, shallow stubble cultivation across the full surface after combine harvesting and for subsequent, deeper passes with intensive mixing, or for seedbed preparation for mulch seeding. The depth control in the mounted strong model is easily accessible, and the working depth can be adjusted finely between 5 and 30 cm without tools.

TECHNICAL DETAILS

CODE	NUMBER OF LEG	NUMBER OF ROW	CHASSIS DIMENSION (MM)	WORKING WIDTH (CM)	WORKING DEPTH (CM)	REQUIRED POWER (HP)
SMSLC-2-7	7	2	80X80	205	20-40	60-70
SMSLC-2-9	9	2	80X80	265	20-40	70-80
SMSLC-2-11	11	2	80X80	305	20-40	80-90
SMSLC-2-13	13	2	80X80	345	20-40	90-110
SMSLC-2-15	15	2	80X80	395	20-40	110-130

CODE	NUMBER OF LEG	NUMBER OF ROW	CHASSIS DIMENSION (MM)	WORKING WIDTH (CM)	WORKING DEPTH (CM)	REQUIRED POWER (HP)
SMSLC-3-11	11	3	80X80	281	20-40	70-80
SMSLC-3-13	13	3	80X80	337	20-40	80-90
SMSLC-3-16	16	3	80X80	390	20-40	90-100
SMSLC-3-17	17	3	80X80	430	20-40	100-120
SMSLC-3-19	19	3	80X80	481	20-40	120-140

HEAVY TYPE SPRING LOADED CHISEL PLOUGH



SMSLCH-9R

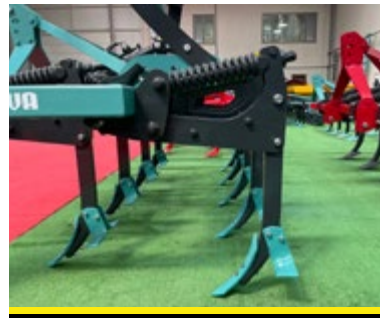


GENERAL FEATURES

The strong intensive chisel is suited for both the first, shallow stubble cultivation across the full surface after combine harvesting and for subsequent, deeper passes with intensive mixing, or for seedbed preparation for mulch seeding. The depth control in the mounted strong model is easily accessible, and the working depth can be adjusted finely between 5 and 30 cm without tools.

TECHNICAL DETAILS

CODE	LEG SPACE (CM)	CHASSIS DIMENSION (MM)	WORKING WIDTH (CM)	WORKING DEPTH (CM)	WEIGHT (KG)	REQUIRED POWER (HP)
SMSLCH-7	15-35	100X100	200	20-40	630	60-70
SMSLCH-9	15-35	100X100	260	20-40	795	70-80
SMSLCH-11	15-35	100X100	300	20-40	980	80-90
SMSLCH-13	15-35	100X100	340	20-40	1100	90-110
SMSLCH-15	15-35	100X100	390	20-40	1330	110-130



FOLDABLE TYPE SPRING LOADED CHISEL PLOUGH



SMFSLCH-6

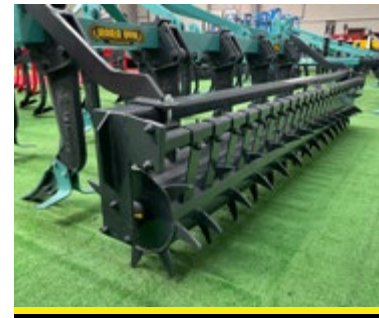
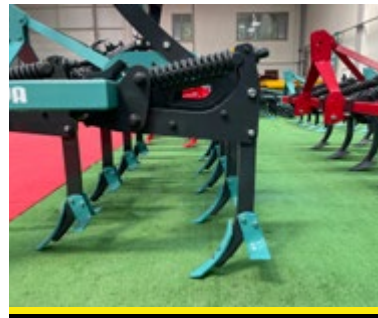


GENERAL FEATURES

The strong intensive chisel is suited for both the first, shallow stubble cultivation across the full surface after combine harvesting and for subsequent, deeper passes with intensive mixing, or for seedbed preparation for mulch seeding. The depth control in the mounted strong model is easily accessible, and the working depth can be adjusted finely between 5 and 30 cm without tools.

TECHNICAL DETAILS

CODE	LEG SPACE (CM)	TYPE OF CHASSIS	CHASSIS DIMENSION (MM)	WORKING WIDTH (CM)	WORKING DEPTH (CM)	WEIGHT (KG)	REQUIRED POWER (HP)
SMFSLCH-5	15-35	TRAILED / FOLDABLE / 3 WING	100X100	500	20-40	3200	175-250
SMFSLCH-6	15-35	TRAILED / FOLDABLE / 3 WING	100X100	600	20-40	3810	210-300
SMFSLCH-7	15-35	TRAILED / FOLDABLE / 3 WING	100X100	700	20-40	4420	245-350
SMFSLCH-8	15-35	TRAILED / FOLDABLE / 3 WING	100X100	800	20-40	5030	280-400



CHISEL PLOUGH



SMC-9R



SMCF-7

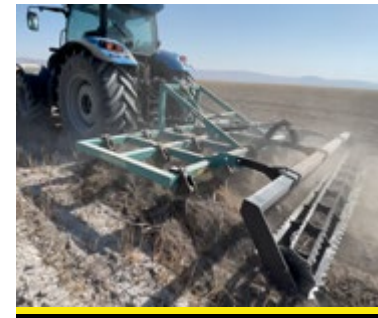
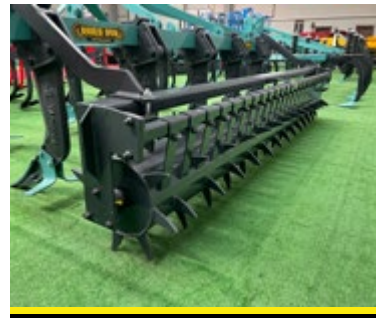


GENERAL FEATURES

The strong intensive chisel is suited for both the first, shallow stubble cultivation across the full surface after combine harvesting and for subsequent, deeper passes with intensive mixing, or for seedbed preparation for mulch seeding. The depth control in the mounted strong model is easily accessible, and the working depth can be adjusted finely between 5 and 30 cm without tools.

TECHNICAL DETAILS

CODE	LEG SPACE (CM)	CHASSIS DIMENSION (MM)	WORKING WIDTH (CM)	WORKING DEPTH (CM)	WEIGHT (KG)	REQUIRED POWER (HP)
SMC-5	15-30	100X100	150	20-40	340	50-60
SMC-7	15-30	100X100	190	20-40	430	60-70
SMC-9	15-30	100X100	255	20-40	540	70-80
SMC-11	15-30	100X100	300	20-40	620	80-90
SMC-13	15-30	100X100	350	20-40	820	90-110
SMC-15	15-30	100X100	400	20-40	945	110-130



TRAILED TYPE LAND (CAMBRIDGE) ROLLER



SMRLT-2850



SMRLT-2850

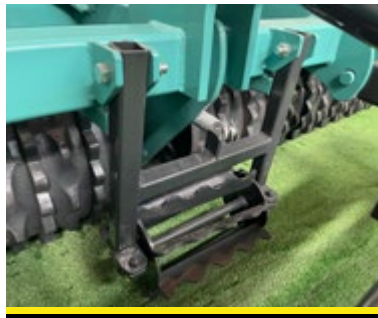


GENERAL FEATURES

It is used as trailed. It breaks clods into pieces by crushing them which other soil preparation machines are not able to do. It balances the air gaps trapped in the soil by crushing uncrushed soil before sowing. If it is used after sowing by pushing seeds within the soil, it prevents the seeds to get air. It breaks the emerged tough soil after the rain by without damaging the plant.

TECHNICAL DETAILS

CODE	TYPE OF CHASSIS	NUMBER OF CASTING	WORKING WIDTH (CM)	DIAMETER OF CASTING (CM)
SMRLT-2850	TRAILED TYPE WITH WHEEL	28	310	50
SMRLT-3050	TRAILED TYPE WITH WHEEL	30	335	50
SMRLT-3250	TRAILED TYPE WITH WHEEL	32	355	50
SMRLT-3650	TRAILED TYPE WITH WHEEL	36	400	50
SMRLT-4050	TRAILED TYPE WITH WHEEL	40	450	50



FOLDABLE TYPE LAND (CAMBRIDGE) ROLLER



SMRLF-630



SMRLF-500

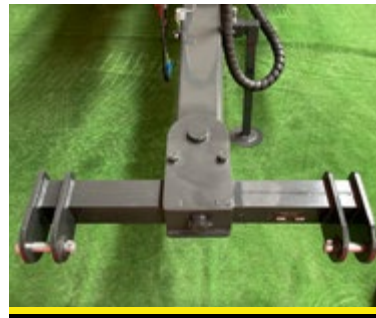


GENERAL FEATURES

It is used as trailed. It breaks clods into pieces by crushing them which other soil preparation machines are not able to do. It balances the air gaps trapped in the soil by crushing uncrushed soil before sowing. If it is used after sowing by pushing seeds within the soil, it prevents the seeds to get air. It breaks the emerged tough soil after the rain by without damaging the plant.

TECHNICAL DETAILS

CODE	TYPE OF CHASSIS	FLEXIBILITY OF WINGS	WORKING WIDTH (CM)	DIAMETER OF CASTING (CM)	WEIGHT (KG)
SMRLF-500	TRAILED TYPE WITH WHEEL	WITH SPRING	500	50	2850
SMRLF-630	TRAILED TYPE WITH WHEEL	WITH SPRING	630	50	3250



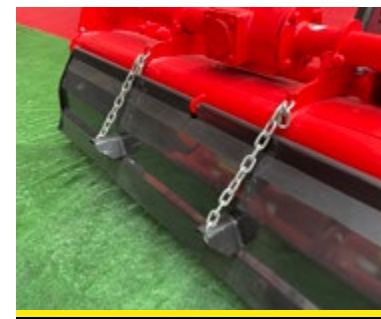
GARDEN TYPE ROTAVATOR



SMRTG-210



SMRTG-210





GENERAL FEATURES

The professional garden type rotovator with digger series produced in our factory takes its motion from the tail shaft and is a milling part that moves perpendicular to the direction of movement and it consists of blades. Our machine is used to hoe fields and it mixes organic substances in the soil (stalk, green grass and all kinds of plant residues) into the soil by crushing them. It also avoids microorganisms to be destroyed. Thanks to the rear cover, while our machine is processing the soil, it performs an ideal field process by performing the levelling process. It is produced with one or four cycles.

TECHNICAL DETAILS

CODE	NUMBER OF BLADE	WORKING WIDTH (CM)	TYPE OF GEARBOX	WORKING DEPTH (CM)	WEIGHT (KG)	REQUIRED POWER (HP)
SMRTG-130	30	120	SINGLE ROTATION	20	400	35
SMRTG-160	36	150	SINGLE ROTATION	20	440	40
SMRTG-180	42	175	SINGLE ROTATION	20	480	50
SMRTG-210	48	200	SINGLE ROTATION	20	532	55
SMRTG-240	54	230	SINGLE ROTATION	20	590	60
SMRTG-130P	30	120	VARIABLE ROTATION	20	435	35
SMRTG-160P	36	150	VARIABLE ROTATION	20	475	40
SMRTG-180P	42	175	VARIABLE ROTATION	20	515	50
SMRTG-210P	48	200	VARIABLE ROTATION	20	555	55
SMRTG-240P	54	230	VARIABLE ROTATION	20	600	60
SMRTG-260P	60	250	VARIABLE ROTATION	20	640	65
SMRTG-280P	66	270	VARIABLE ROTATION	20	720	75
SMRTG-315P	78	314	VARIABLE ROTATION	20	870	90
SMRTG-350P	84	340	VARIABLE ROTATION	20	1460	110
SMRTG-400P	96	370	VARIABLE ROTATION	20	1535	120

POWER HARROW ROTAVATOR



SMPHR-300



SMPHR-300



SMPHR-300



GENERAL FEATURES

The power harrow rotovator, which is rear shaft driven, robust and useful, is an equipment that prepares seed beds by processing the soil. It can process the soil vertically. Thus, it will not form a mount and as it does not turn the soil upside- down, the soil keeps its humidity. Thanks to the toothed roll at the back of the machine (for seed germination), it prepares ideal and very even seed beds and so yield will be enhanced. Furthermore, by combining the optional hydraulic attachment with any drill (Pneumatic Seed Drill or Seed Drill) with Vertical Mixer, it saves time and fuel by processing soil and planting at the same time.

TECHNICAL DETAILS

CODE	NUMBER OF BLADE	WORKING WIDTH (CM)	WORKING DEPTH (CM)	WEIGHT (KG)	REQUIRED POWER (HP)
SMPHR-200	16	200	8-28	950	80-90
SMPHR-250	20	250	8-28	1250	90-110
SMPHR-300	24	298	8-28	1450	100-120
SMPHR-350	24	348	8-28	1665	140-160
SMPHR-400	32	398	8-28	1840	150-170

STONE PICKER



SMSP-175



SMSP-175



SMSP-175



SMSP-140G



GENERAL FEATURES

The Soilmaster Stone Picker you can easily remove and collect stones from cultivated land.

Stone Picker is a machine specially designed to collect stones on the surface and at a depth of 30cm in the field. This machine can also be used in industrial areas to clean sites and also in cleaning beach sand. Stone Picker 140 cm, 175 cm and 200 cm working width, collects easily stones from 3cm size to 40cm, the extra soil and smaller stones go through the sieve and back onto the ground. The Hydraulic Unloading System, you can discharge stones directly into a dump trailer, a truck or in the corner of the field. Soilmaster Stone Picker is made of high quality material and thanks to its solid structure it will serve you for a long working life. The vibrating screen, it provides easy operation even in moist soil. It does not take soil to its store, it easily removes the soil and increases the ability of the tractor without difficulty and thus saves fuel on the tractor. The newly designed drum system, it prevents spring breakage. It is designed to allow long life of parts and easy replacement of worn parts.

TECHNICAL DETAILS

CODE	TYPE OF MACHINE	WORKING DEPTH (CM)	LENGTH (CM)	TRANSPORT WIDTH (CM)	HEIGHT (CM)	WORKING WIDTH (CM)	UNLOAD HEIGHT (CM)	DIAMETER OF COLLECTED STONES (CM)	STORAGE CAPACITY (KG)	WEIGHT (KG)	REQUIRED POWER (HP)
SMSP-140G	GARDEN	20-25	520	225	155	140	185	3-40	3500-4500	2500	50-65
SMSP-140	STANDARD	30-35	520	225	255	140	255	3-40	4500	3180	50-65
SMSP-175G	GARDEN	20-25	520	235	165	175	185	3-40	5500	3000	60-80
SMSP-175	STANDARD	30-35	520	255	255	175	255	3-40	6000	3555	60-80
SMSP-200G	GARDEN	30-35	520	260	165	200	185	3-40	6500	3300	80-90
SMSP-200	STANDARD	30-35	520	280	255	200	260	3-40	8500	3850	80-90



STONE CRUSHER



SMSCR-150

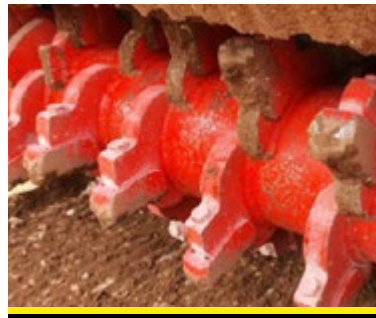


GENERAL FEATURES

Soilmaster Stone crusher small dimensions and lower weight make it highly versatile and ideal for use in fields, greenhouses, sea coasts, vineyards, forest lands, orchards and industrial areas. It is designed and built for agricultural soil reclamation in loose and superficial rock. This machine crushes stones up to 20 cm and tills the soil with a max working depth of 20 cm. The very strong frame, with efficient carbide tips and anti-wear hammer supports makes this stone crusher very wearresistant. Technical requirements for operating this stone crusher are creeping speed (min 0.3 km / hr) and a hydraulics three point linkage tractor of a minimum 80 HP.

TECHNICAL DETAILS

CODE	WORKING WIDTH (CM)	WORKING DEPTH (CM)	WORKING SPEED (KM/H)	TOTAL NUMBER OF HAMMERS	HAMMERS FEATURE	INSIDE COATING	HAMMERS POSITION	PTO SPEED	REAR DOOR	WEIGHT (KG)	TRACTOR FEATURE	REQUIRED POWER (HP)
SMSCR-150	150	MAX. 20	0,3-2	34	BORON CARBIDE	HARDOX	HELIX	540 RPM	HYDRAULIC	1465	CREEPING SPEED	80



SOIL MASTER
AGRICULTURAL MACHINERY



**SOWING
AND PLANTING**



SOILMASTER AGRICULTURAL MACHINERY



DISC TYPE PNEUMATIC SEED DRILL



SMPSD-6F



SMPSD-6F



SMPSD-4



SMPSD-6F



SMPSD-6F



SMPSD-4



SMPSD-4



GENERAL FEATURES

Soilmaster Disc Type Pneumatic Seeder has manufactured to respond to all requests of modern agriculture provide a minimum cost, maximum efficiency. Soilmaster Disc Type Pneumatic Seeder provides excellent performance on all kind of soil, applied to the soil and the soil treated after harvest. It is suitable for most plants. Soilmaster Disc Type Pneumatic Seeder is a strong, durable and useful machine.

TECHNICAL DETAILS

CODE	NUMBER OF UNITS	SPACE BETWEEN UNITS (CM)	SEED CAPACITY	FERTILIZER CAPACITY	WORKING SPEED (KM/H)	PTO ROTATION (RPM)	WEIGHT (KG)	REQUIRED POWER (HP)
SMPSD-4	4	45-70-75	35 LT X 4	-	6-8	540	900	70-80
SMPSD-4F	4	45-70-75	35 LT X 4	160 LT X 2	6-8	540	1100	70-80
SMPSD-6	6	45-70-75	35 LT X 6	-	6-8	540	1200	90-110
SMPSD-6F	6	45-70-75	35 LT X 6	200 LT X 2	6-8	540	1400	90-110
SMPSD-8	8	45-70-75	35 LT X 8	-	6-8	540	1450	110-130
SMPSD-8F	8	45-70-75	35 LT X 8	240 LT X 2	6-8	540	1650	110-130

MOUNTED SEED DRILL DOUBLE DISC



SMMSDD-31



SMMSDD-23N



SMMSDD-31



SMMSDD-23N



SMMSDD-31



GENERAL FEATURES

Double disc legs consist of two flat discs having a certain angle between them. The joint point of disks is located at front side and a little over the groove bottom. Seed hopper was placed in the space between discs expanding rearward. Even if these are disc legs, they open grooves pushing the soil to the aside same as axe legs. However, groove size is wider. Most of the seeds are sowed in the same depth and covered with moist soil pushed aside. Height of this ridge increases as the groove expands and becomes as if it is sowed in a row. Double disc legs can be used in all kinds of climate and soil conditions due to these properties.

TECHNICAL DETAILS

CODE	TYPE OF MACHINE	NUMBER OF LEG	INTERROW DISTANCE (MM)	WORKING WIDTH (MM)	TRANSPORT WIDTH (MM)	SEED CAPACITY (LT)	FERTILIZER CAPACITY (LT)	SEED CAPACITY WITHOUT FERTILIZER (LT)	WORKING SPEED (KM/H)	WEIGHT (KG)	REQUIRED POWER (HP)
SMMSDD-19	HEAVY	19	130	2500	2735	460	305	750	5-8	1010	70-80
SMMSDD-23N	NORMAL	23	130	3000	3000	550	370	950	5-8	980	70-80
SMMSDD-23	HEAVY	23	130	3000	3235	550	370	950	5-8	1190	80-90
SMMSDD-27	HEAVY	27	130	3500	3735	640	400	1150	5-8	1380	100-110
SMMSDD-31N	NORMAL	31	130	4000	4000	730	425	1350	5-8	1220	80-100
SMMSDD-31	HEAVY	31	130	4000	4235	730	425	1350	5-8	1530	110-120
SMMSDD-39	HEAVY	39	130	5000	5350	910	480	1750	5-8	2350	130-150
SMMSDD-47	HEAVY	47	130	6000	6350	1090	535	2150	5-8	2760	160-200



SOIL MASTER
AGRICULTURAL MACHINERY



**FERTILIZING
AND PLANT
PROTECTION**



SOILMASTER AGRICULTURAL MACHINERY



MOUNTED TYPE FIELD SPRAYER



SMFS-400



SMFS-600



SMFS-500



SMFS-200



SMFS-600



SMFS-600



SMFS-400



SMFS-600



GENERAL FEATURES

Tractor Mounted Type Sprayers are developed to meet the different requirements of plant protection treatments. Our Field Sprayers extremely versatile and suitable. They are for operating in open-field cultivations, sprayer and distribute herbicides among the plant rows. There is an availability of several mechanical and hydraulic spraying booms together with different equipments and option that allow our sprayers to suit the requirement of the single user in the specific treatments.

TECHNICAL DETAILS

CODE	CAPACITY (LT)	MATERIAL OF DEPOT	TYPE OF BOOM	LENGTH OF BOOM	PUMP	NUMBER OF DIAPHRAGM PISTON	FLOW RATE (LT/MIN.)	PRESSURE (BAR)	PTO ROTATION (RPM)
SMFS-400	400	PLASTIC	STANDARD	10 METER	S-80	3	80	50	540
SMFS-500	500	PLASTIC	STANDARD	10 METER	S-80	3	80	50	540
SMFS-600	600	PLASTIC	STANDARD	10 METER	S-80	3	80	50	540
SMFS-800	800	PLASTIC	STANDARD	10 METER	S-80	3	80	50	540
SMFS-1000	1000	PLASTIC	STANDARD	10 METER	S-80	3	80	50	540
SMFS-600	600	PLASTIC	STANDARD	12 METER	S-80	3	80	50	540
SMFS-800	800	PLASTIC	STANDARD	12 METER	S-80	3	80	50	540
SMFS-1000	1000	PLASTIC	STANDARD	12 METER	S-80	3	80	50	540



MOUNTED TYPE PROFESSIONAL SERIES FIELD SPRAYER



SMFS-800



SMFS-600



SMFS-800



SMFS-1000



SMFS-1000



SMFS-1000



GENERAL FEATURES

Tractor Mounted Type Sprayers are developed to meet the different requirements of plant protection treatments. Our Field Sprayers extremely versatile and suitable. They are for operating in open-field cultivations, sprayer and distribute herbicides among the plant rows. There is an availability of several mechanical and hydraulic spraying booms together with different equipments and option that allow our sprayers to suit the requirement of the single user in the specific treatments.

TECHNICAL DETAILS

CODE	CAPACITY (LT)	SERIES	TYPE OF BOOM	LENGTH OF BOOM	PUMP	NUMBER OF DIAPHRAGM PISTON	FLOW RATE (LT/MIN.)	PRESSURE (BAR)	PTO ROTATION (RPM)
SMFS-600	600	PROFESSIONAL	HORIZONTAL TYPE BOOM / UP AND DOWN MOVEMENT WITH HYDRAULIC LIFT	15-16 METER	S-105	4	105	50	540
SMFS-800	800	PROFESSIONAL	HORIZONTAL TYPE BOOM / UP AND DOWN MOVEMENT WITH HYDRAULIC LIFT	15-16 METER	S-105	4	105	50	540
SMFS-1000	1000	PROFESSIONAL	HORIZONTAL TYPE BOOM / UP AND DOWN MOVEMENT WITH HYDRAULIC LIFT	15-16 METER	S-105	4	105	50	540
SMFS-1200	1200	PROFESSIONAL	HORIZONTAL TYPE BOOM / UP AND DOWN MOVEMENT WITH HYDRAULIC LIFT	15-16 METER	S-105	4	105	50	540
SMFS-800	800	PROFESSIONAL	HORIZONTAL TYPE BOOM / UP AND DOWN MOVEMENT WITH HYDRAULIC HIGH LIFT	15-16 METER	S-105	4	105	50	540
SMFS-1000	1000	PROFESSIONAL	HORIZONTAL TYPE BOOM / UP AND DOWN MOVEMENT WITH HYDRAULIC HIGH LIFT	15-16 METER	S-105	4	105	50	540
SMFS-800	800	PROFESSIONAL AUTOMATIC	X TYPE AUTOMATIC / UP AND DOWN MOVEMENT WITH HYDRAULIC LIFT	15 METER	S-105	4	105	50	540
SMFS-1000	1000	PROFESSIONAL AUTOMATIC	X TYPE AUTOMATIC / UP AND DOWN MOVEMENT WITH HYDRAULIC LIFT	15 METER	S-105	4	105	50	540
SMFS-1200	1200	PROFESSIONAL AUTOMATIC	X TYPE AUTOMATIC / UP AND DOWN MOVEMENT WITH HYDRAULIC LIFT	15 METER	S-105	4	105	50	540
SMFS-800	800	PROFESSIONAL AUTOMATIC	HORIZONTAL TYPE AUTOMATIC / UP AND DOWN MOVEMENT WITH HYDRAULIC LIFT	15 METER	S-105	4	105	50	540
SMFS-1000	1000	PROFESSIONAL AUTOMATIC	HORIZONTAL TYPE AUTOMATIC / UP AND DOWN MOVEMENT WITH HYDRAULIC LIFT	15 METER	S-105	4	105	50	540
SMFS-1200	1200	PROFESSIONAL AUTOMATIC	HORIZONTAL TYPE AUTOMATIC / UP AND DOWN MOVEMENT WITH HYDRAULIC LIFT	15 METER	S-105	4	105	50	540
SMFS-1000	1000	PROFESSIONAL AUTOMATIC	HORIZONTAL TYPE AUTOMATIC / UP AND DOWN MOVEMENT WITH HYDRAULIC LIFT	18 METER	S-140	3	135	50	540
SMFS-1000	1000	PROFESSIONAL AUTOMATIC	X TYPE AUTOMATIC / UP AND DOWN MOVEMENT WITH HYDRAULIC LIFT	18 METER	S-140	3	135	50	540

TRAILED TYPE FIELD SPRAYER



SMFS-3000TH



SMFS-3000TH



SMFS-3000TX



SMFS-2000TN



SMFS-2000TN



SMFS-2000TX



SMFS-2000T



SMFS-2000TX



SMFS-2000TU



SMFS-2000TX



GENERAL FEATURES

Tractor Trailed Type Sprayers are developed to meet the different requirements of plant protection treatments. Our Field Sprayers extremely versatile and suitable. They are for operating in open-field cultivations, sprayer and distribute herbicides among the plant rows. There is an availability of several mechanical and hydraulic spraying booms together with different equipments and option that allow our sprayers to suit the requirement of the single user in the specific treatments.

TECHNICAL DETAILS

CODE	CAPACITY (LT)	TYPE OF CHASSIS	TYPE OF WHEEL	TYPE OF BOOM	LENGTH OF BOOM	PUMP	NUMBER OF DIAPHRAGM PISTON	FLOW RATE (LT/MIN.)	PRESSURE (BAR)	PTO ROTATION (RPM)
SMFS-2000TN	2000	TRAILED	NORMAL	HORIZONTAL TYPE BOOM / UP AND DOWN MOVEMENT WITH HYDRAULIC LIFT	15-16 METER	S-105	4	105	50	540
SMFS-2000T	2000	TRAILED	HIGH	HORIZONTAL TYPE BOOM / UP AND DOWN MOVEMENT WITH HYDRAULIC LIFT	15-16 METER	S-105	4	105	50	540
SMFS-2000TX	2000	TRAILED	HIGH	X TYPE AUTOMATIC / UP AND DOWN MOVEMENT WITH HYDRAULIC LIFT	15 METER	S-105	4	105	50	540
SMFS-2000TH	2000	TRAILED	HIGH	HORIZONTAL TYPE AUTOMATIC / UP AND DOWN MOVEMENT WITH HYDRAULIC LIFT	15 METER	S-105	4	105	50	540
SMFS-3000T	3000	TRAILED	HIGH	HORIZONTAL TYPE BOOM / UP AND DOWN MOVEMENT WITH HYDRAULIC LIFT	15-16 METER	S-105	4	105	50	540
SMFS-3000TX	3000	TRAILED	HIGH	X TYPE AUTOMATIC / UP AND DOWN MOVEMENT WITH HYDRAULIC LIFT	15 METER	S-105	4	105	50	540
SMFS-3000TH	3000	TRAILED	HIGH	HORIZONTAL TYPE AUTOMATIC / UP AND DOWN MOVEMENT WITH HYDRAULIC LIFT	15 METER	S-105	4	105	50	540



MOUNTED TYPE TURBO ATOMIZER



SMTA-400



SMTA-400



SMTA-400



SMTA-200



SMTA-600



SMTA-600



SMTA-500



SMTA-200



GENERAL FEATURES

It has polyester and polyethylene depot and membrane pumps, which are operated by power take-off from tractor conveys pressuring chemical liquid to nozzles on fan. Fan is also operated with power- take off and it sends pressured air out. Pressured chemical liquid is sprayed by adjustable nozzles around the fan by air circulation. Atomization is provided on right or left sides by remote control.

TECHNICAL DETAILS

CODE	CAPACITY (LT)	MATERIAL OF DEPOT	TYPE OF MACHINE	DIAMATER OF FAN	NUMBER OF NOZZLE	PUMP	NUMBER OF DIAPHRAGM PISTON	FLOW RATE (LT/MIN.)	PRESSURE (BAR)	PTO ROTATION (RPM)
SMTA-200	200	PLASTIC	BELT-SEPARATOR	60 CM	8	S-80	3	80	50	540
SMTA-300	300	PLASTIC	BELT-SEPARATOR	60 CM	8	S-80	3	80	50	540
SMTA-400	400	PLASTIC	BELT-SEPARATOR	60 CM	8	S-80	3	80	50	540
SMTA-400	400	PLASTIC	BELT-SEPARATOR	75 CM	10	S-105	4	105	50	540
SMTA-500	500	PLASTIC	BELT-SEPARATOR	75 CM	10	S-105	4	105	50	540
SMTA-600	600	PLASTIC	BELT-SEPARATOR	75 CM	10	S-105	4	105	50	540
SMTA-600	600	PLASTIC	GEARBOX	75 CM	10	S-105	4	105	50	540
SMTA-800	800	PLASTIC	GEARBOX	75 CM	10	S-105	4	105	50	540

TRAILED TYPE TURBO ATOMIZER



SMTA-2000



SMTA-2000



SMTA-2000



SMTA-1600



SMTA-600



SMTA-1000



GENERAL FEATURES

It has polyester and polyethylene depot and membrane pumps, which are operated by power take-off from tractor conveys pressuring chemical liquid to nozzles on fan. Fan is also operated with power- take off and it sends pressured air out. Pressured chemical liquid is sprayed by adjustable nozzles around the fan by air circulation. Atomization is provided on right or left sides by remote control.

TECHNICAL DETAILS

CODE	CAPACITY (LT)	MATERIAL OF DEPOT	TYPE OF MACHINE	DIAMATER OF FAN	NUMBER OF NOZZLE	PUMP	NUMBER OF DIAPHRAGM PISTON	FLOW RATE (LT/MIN.)	PRESSURE (BAR)	PTO ROTATION (RPM)
SMTA-600	600	PLASTIC	GEARBOX	75 CM	10	S-105	4	105	50	540
SMTA-1000	1000	PLASTIC	GEARBOX	75 CM	10	S-105	4	105	50	540
SMTA-1000	1000	PLASTIC	GEARBOX / WATER DEPOT	85 CM DOUBLE	14	S-140	3	135	50	540
SMTA-1200	1200	PLASTIC	GEARBOX / WATER DEPOT	90 CM DOUBLE	16	S-140	3	135	50	540
SMTA-1600	1600	PLASTIC	GEARBOX / WATER DEPOT	90 CM DOUBLE	16	S-140	3	135	50	540
SMTA-2000	2000	PLASTIC	GEARBOX / WATER DEPOT	90 CM DOUBLE	16	S-140	3	135	50	540



TRAILED V TYPE TURBO ATOMIZER



SMTA-2000



SMTA-1200



GENERAL FEATURES

It has polyester and polyethylene depot and membrane pumps, which are operated by power take-off from tractor conveys pressuring chemical liquid to nozzles on fan. Fan is also operated with power- take off and it sends pressured air out. Pressured chemical liquid is sprayed by adjustable nozzles around the fan by air circulation. Atomization is provided on right or left sides by remote control.

TECHNICAL DETAILS

CODE	CAPACITY (LT)	MATERIAL OF DEPOT	TYPE OF MACHINE	TYPE OF FAN	DIAMATER OF FAN	NUMBER OF NOZZLE	PUMP	NUMBER OF DIAPHRAGM PISTON	FLOW RATE (LT/MIN.)	PRESSURE (BAR)	PTO ROTATION (RPM)
SMTA-600	600	PLASTIC	GEARBOX	V TYPE FAN	90 CM	16	105	4	105	50	540
SMTA-1000	1000	PLASTIC	GEARBOX / WATER DEPOT	V TYPE FAN	90 CM	16	140	3	135	50	540
SMTA-1200	1200	PLASTIC	GEARBOX / WATER DEPOT	V TYPE FAN	90 CM	16	140	3	135	50	540
SMTA-1600	1600	PLASTIC	GEARBOX / WATER DEPOT	V TYPE FAN	90 CM	16	140	3	135	50	540
SMTA-2000	2000	PLASTIC	GEARBOX / WATER DEPOT	V TYPE FAN	90 CM	16	140	3	135	50	540



TRAILED ROBOT ROTATING HEAD TYPE TURBO ATOMIZER



SMTA-2000



SMTA-2000



GENERAL FEATURES

It has polyester and polyethylene depot and membrane pumps, which are operated by power take-off from tractor conveys pressuring chemical liquid to nozzles on fan. Fan is also operated with power- take off and it sends pressured air out. Pressured chemical liquid is sprayed by adjustable nozzles around the fan by air circulation. Atomization is provided on right or left sides by remote control.

TECHNICAL DETAILS

CODE	CAPACITY (LT)	MATERIAL OF DEPOT	TYPE OF MACHINE	TYPE OF FAN	DIAMETER OF FAN	NUMBER OF NOZZLE	PUMP	NUMBER OF DIAPHRAGM PISTON	FLOW RATE (LT/MIN.)	PRESSURE (BAR)	PTO ROTATION (RPM)
SMTA-600	600	PLASTIC	GEARBOX	ROBOT ROTATING HEAD	60 CM TIRBUNE FAN	13	105	4	105	50	540
SMTA-1000	1000	PLASTIC	GEARBOX / WATER DEPOT	ROBOT ROTATING HEAD	60 CM TIRBUNE FAN	13	140	3	135	50	540
SMTA-1200	1200	PLASTIC	GEARBOX / WATER DEPOT	ROBOT ROTATING HEAD	60 CM TIRBUNE FAN	13	140	3	135	50	540
SMTA-1600	1600	PLASTIC	GEARBOX / WATER DEPOT	ROBOT ROTATING HEAD	60 CM TIRBUNE FAN	13	140	3	135	50	540
SMTA-2000	2000	PLASTIC	GEARBOX / WATER DEPOT	ROBOT ROTATING HEAD	60 CM TIRBUNE FAN	13	140	3	135	50	540



TRAILED TYPE GARDEN SPRAYER



SMGS-1000



SMGS-2000



SMGS-2000



SMGS-1000



SMGS-1000



SMGS-1000



GENERAL FEATURES

Garden sprayer series is a model that has been used for many years by its easy attachment of apparatus such as a boom to its back. It provides you comfort on working with the return system on the machine. An excellent product has emerged with the operating comfort and high performance of the membrane pump, chassis strength and tank quality.

TECHNICAL DETAILS

CODE	CAPACITY (LT)	TYPE OF MACHINE	LENGTH OF HOSE	EXTRA FEATURE	PUMP	NUMBER OF DIAPHRAGM PISTON	FLOW RATE (LT/MIN.)	PRESSURE (BAR)	PTO ROTATION (RPM)
SMGS-1000	1000	TRAILED	2 X 15 METER	2 PCS. GUN + HOSE ROLLING APPARATUS	S-105	4	105	50	540
SMGS-1200	1200	TRAILED	2 X 15 METER	2 PCS. GUN + HOSE ROLLING APPARATUS	S-105	4	105	50	540
SMGS-1600	1600	TRAILED	2 X 15 METER	2 PCS. GUN + HOSE ROLLING APPARATUS	S-105	4	105	50	540
SMGS-2000	2000	TRAILED	2 X 15 METER	2 PCS. GUN + HOSE ROLLING APPARATUS	S-105	4	105	50	540

MOUNTED SQUARE DEPOT TYPE FERTILIZER SPREADER



SMFRS-1000DH



SMFRS-800SM



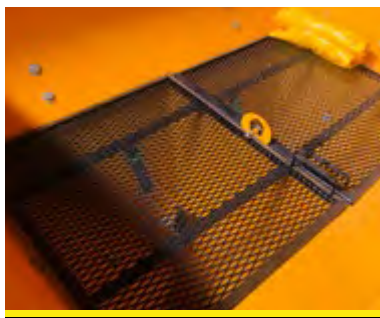
SMFRS-1000DH



SMFRS-400SH



SMFRS-400SM





GENERAL FEATURES

The fertilizer spreader is used before and after crop planting. The purpose of using the fertilizer spreader is for increasing soil and crop yields. Our fertilizer spreaders, which are connected to the tractor with a three-point suspension system, take their movement from the tractor PTO. Our Fertilizer Spreader, which has high quality gearboxes, receives movement from PTO and transfer it to the disc and performs the fertilizer spreading process with the force generated on the disc.

TECHNICAL DETAILS

CODE	CAPACITY (LT)	TYPE OF MACHINE	TYPE OF DEPOT	TYPE OF MIXER	TYPE OF GEARBOX	OPEN-CLOSE ADJUSTMENT	WORKING WIDTH	PTO ROTATION (RPM)	REQUIRED POWER (HP)	INOX DISC	TENT
SMFRS-400SM	400	MOUNTED	SQUARE	VERTICAL	SINGLE DISC	MANUAL	16-18 METER	540	40-45	OPTIONAL	OPTIONAL
SMFRS-500SM	500	MOUNTED	SQUARE	VERTICAL	SINGLE DISC	MANUAL	16-18 METER	540	45-55	OPTIONAL	OPTIONAL
SMFRS-600SM	600	MOUNTED	SQUARE	VERTICAL	SINGLE DISC	MANUAL	16-18 METER	540	55-65	OPTIONAL	OPTIONAL
SMFRS-800SM	800	MOUNTED	SQUARE	VERTICAL	SINGLE DISC	MANUAL	16-18 METER	540	65-70	OPTIONAL	OPTIONAL
SMFRS-1000SM	1000	MOUNTED	SQUARE	VERTICAL	SINGLE DISC	MANUAL	16-18 METER	540	70-75	OPTIONAL	OPTIONAL
SMFRS-400SH	400	MOUNTED	SQUARE	VERTICAL	SINGLE DISC	HYDRAULIC	16-18 METER	540	40-45	OPTIONAL	OPTIONAL
SMFRS-500SH	500	MOUNTED	SQUARE	VERTICAL	SINGLE DISC	HYDRAULIC	16-18 METER	540	45-55	OPTIONAL	OPTIONAL
SMFRS-600SH	600	MOUNTED	SQUARE	VERTICAL	SINGLE DISC	HYDRAULIC	16-18 METER	540	55-65	OPTIONAL	OPTIONAL
SMFRS-800SH	800	MOUNTED	SQUARE	VERTICAL	SINGLE DISC	HYDRAULIC	16-18 METER	540	65-70	OPTIONAL	OPTIONAL
SMFRS-1000SH	1000	MOUNTED	SQUARE	VERTICAL	SINGLE DISC	HYDRAULIC	16-18 METER	540	70-75	OPTIONAL	OPTIONAL
SMFRS-500DM	500	MOUNTED	SQUARE	VERTICAL	DOUBLE DISC	MANUAL	18-24 METER	540	45-55	OPTIONAL	OPTIONAL
SMFRS-600DM	600	MOUNTED	SQUARE	VERTICAL	DOUBLE DISC	MANUAL	18-24 METER	540	55-65	OPTIONAL	OPTIONAL
SMFRS-800DM	800	MOUNTED	SQUARE	VERTICAL	DOUBLE DISC	MANUAL	18-24 METER	540	65-70	OPTIONAL	OPTIONAL
SMFRS-1000DM	1000	MOUNTED	SQUARE	VERTICAL	DOUBLE DISC	MANUAL	18-24 METER	540	70-75	OPTIONAL	OPTIONAL
SMFRS-1200DM	1200	MOUNTED	SQUARE	VERTICAL	DOUBLE DISC	MANUAL	18-24 METER	540	75-80	OPTIONAL	OPTIONAL
SMFRS-1500DM	1500	MOUNTED	SQUARE	VERTICAL	DOUBLE DISC	MANUAL	18-24 METER	540	80-85	OPTIONAL	OPTIONAL
SMFRS-500DH	500	MOUNTED	SQUARE	VERTICAL	DOUBLE DISC	HYDRAULIC	18-24 METER	540	45-55	OPTIONAL	OPTIONAL
SMFRS-600DH	600	MOUNTED	SQUARE	VERTICAL	DOUBLE DISC	HYDRAULIC	18-24 METER	540	55-65	OPTIONAL	OPTIONAL
SMFRS-800DH	800	MOUNTED	SQUARE	VERTICAL	DOUBLE DISC	HYDRAULIC	18-24 METER	540	65-70	OPTIONAL	OPTIONAL
SMFRS-1000DH	1000	MOUNTED	SQUARE	VERTICAL	DOUBLE DISC	HYDRAULIC	18-24 METER	540	70-75	OPTIONAL	OPTIONAL
SMFRS-1200DH	1200	MOUNTED	SQUARE	VERTICAL	DOUBLE DISC	HYDRAULIC	18-24 METER	540	75-80	OPTIONAL	OPTIONAL
SMFRS-1500DH	1500	MOUNTED	SQUARE	VERTICAL	DOUBLE DISC	HYDRAULIC	18-24 METER	540	80-85	OPTIONAL	OPTIONAL

PROFESSIONAL SERIES MOUNTED SQUARE DEPOT TYPE FERTILIZER SPREADER



SMFRS-900PDH



SMFRS-3000PDH



SMFRS-2500PDH



SMFRS-900PDH



SMFRS-1500PDH



SMFRS-1200PDH



SMFRS-900PDH



SMFRS-1800PDH



SMFRS-1500PDH



SMFRS-2000PDH



SMFRS-1200PDH



GENERAL FEATURES

The fertilizer spreader is used before and after crop planting. The purpose of using the fertilizer spreader is for increasing soil and crop yields. Our fertilizer spreaders, which are connected to the tractor with a three-point suspension system, take their movement from the tractor PTO. Our Fertilizer Spreader, which has high quality gearboxes, receives movement from PTO and transfer it to the disc and performs the fertilizer spreading process with the force generated on the disc.

TECHNICAL DETAILS

CODE	CAPACITY (LT)	TYPE OF MACHINE	TYPE OF DEPOT	TYPE OF MIXER	TYPE OF GEARBOX	OPEN-CLOSE ADJUSTMENT	WORKING WIDTH	PTO ROTATION (RPM)	REQUIRED POWER (HP)	INOX DISC	BIGGER DISC 24-36 METER	REAR LIGHT KIT	REFLECTOR KIT	TENT	LADDER
SMFRS-900PDH	900	MOUNTED PROFESSIONAL	SQUARE	HORIZONTAL	DOUBLE DISC	HYDRAULIC	18-24 METER	540	65-75	STANDARD	OPTIONAL	STANDARD	STANDARD	STANDARD	-
SMFRS-1200PDH	1200	MOUNTED PROFESSIONAL	SQUARE	HORIZONTAL	DOUBLE DISC	HYDRAULIC	18-24 METER	540	75-80	STANDARD	OPTIONAL	STANDARD	STANDARD	STANDARD	-
SMFRS-1500PDH	1500	MOUNTED PROFESSIONAL	SQUARE	HORIZONTAL	DOUBLE DISC	HYDRAULIC	18-24 METER	540	80-90	STANDARD	OPTIONAL	STANDARD	STANDARD	STANDARD	-
SMFRS-1800PDH	1800	MOUNTED PROFESSIONAL	SQUARE	HORIZONTAL	DOUBLE DISC	HYDRAULIC	18-24 METER	540	90-100	STANDARD	OPTIONAL	STANDARD	STANDARD	STANDARD	-
SMFRS-2000PDH	2000	MOUNTED PROFESSIONAL	SQUARE	HORIZONTAL	DOUBLE DISC	HYDRAULIC	18-24 METER	540	100-120	STANDARD	OPTIONAL	STANDARD	STANDARD	STANDARD	OPTIONAL



TRAILED TYPE FERTILIZER SPREADER



SMFRS-2500DH



SMFRS-2500DH



SMFRS-3500DH



SMFRS-2500DH



SMFRS-3000DH



SMFRS-2500DH



SMFRS-3500DH



SMFRS-2500DH



SMFRS-3000DH

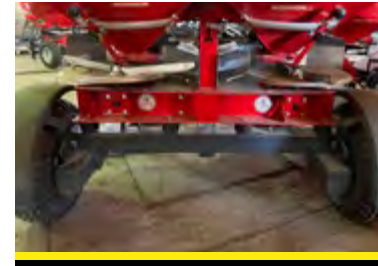


GENERAL FEATURES

The fertilizer spreader is used before and after crop planting. The purpose of using the fertilizer spreader is for increasing soil and crop yields. Our fertilizer spreaders, which are connected to the tractor with a trailed system, take their movement from the tractor PTO. Our Fertilizer Spreader, which has high quality gearboxes, receives movement from PTO and transfer it to the disc and performs the fertilizer spreading process with the force generated on the disc.

TECHNICAL DETAILS

CODE	CAPACITY (LT)	TYPE OF MACHINE	TYPE OF DEPOT	TYPE OF MIXER	TYPE OF GEARBOX	OPEN-CLOSE ADJUSTMENT	WORKING WIDTH	PTO ROTATION (RPM)	REQUIRED POWER (HP)	INOX DISC	BIGGER DISC 24-36 METER	REAR LIGHT KIT	REFLECTOR KIT	TENT	LADDER
SMFRS-2500DH	2500	TRAILED 2 WHEEL	SQUARE	HORIZONTAL	DOUBLE DISC	HYDRAULIC	18-24 METER	540	100-120	STANDARD	OPTIONAL	STANDARD	STANDARD	STANDARD	STANDARD
SMFRS-2500DH	2500	TRAILED 4 WHEEL TANDEM	SQUARE	HORIZONTAL	DOUBLE DISC	HYDRAULIC	18-24 METER	540	100-120	STANDARD	OPTIONAL	STANDARD	STANDARD	STANDARD	STANDARD
SMFRS-3000DH	3000	TRAILED 2 WHEEL	SQUARE	HORIZONTAL	DOUBLE DISC	HYDRAULIC	18-24 METER	540	100-120	STANDARD	OPTIONAL	STANDARD	STANDARD	STANDARD	STANDARD
SMFRS-3000DH	3000	TRAILED 4 WHEEL TANDEM	SQUARE	HORIZONTAL	DOUBLE DISC	HYDRAULIC	18-24 METER	540	100-120	STANDARD	OPTIONAL	STANDARD	STANDARD	STANDARD	STANDARD



SOIL MASTER
AGRICULTURAL MACHINERY



**LIVESTOCK
EQUIPMENTS**



SOILMASTER AGRICULTURAL MACHINERY



VERTICAL TYPE FEED MIXER



SMFMV-3T



SMFMV-3



SMFMV-2



SMFMV-2T



SMFMV-2T





GENERAL FEATURES

This machine is essential for dairy and livestock breeders, it easily provides the required shredding of stalks, alfalfa, oats, grass, bale packages in a short time and without forcing the tractor, it is suitable for both large and small-scale livestock breeders. When silage, beet pulp are added, you will obtain a perfect homogeneous mixture.

TECHNICAL DETAILS

CODE	TYPE OF MACHINE	CAPACITY (M3)	TYPE OF AUGER	NUMBER OF BLADE	NUMBER OF ANIMAL	TYRE SIZE	PTO ROTATION (RPM)	REQUIRED POWER	BUCKET
SMFMV-2	MOUNTED TYPE / PTO (SHAFT)	2	VERTICAL	5	25-30	-	540	35 HP	OPTIONAL
SMFMV-2E	MOUNTED TYPE / PTO (SHAFT)-ELECTRIC	2	VERTICAL	5	25-30	-	540	7,5 KW (380 V)	OPTIONAL
SMFMV-2T	TRAILED TYPE / PTO (SHAFT)	2	VERTICAL	5	25-30	16x6.50-8(170/60-8)	540	35 HP	STANDARD
SMFMV-2TE	TRAILED TYPE / PTO (SHAFT)-ELECTRIC	2	VERTICAL	5	25-30	16x6.50-8(170/60-8)	540	7,5 KW (380 V)	STANDARD
SMFMV-3	TRAILED TYPE / PTO (SHAFT)	3	VERTICAL	5	35-50	195/65 R15	540	40 HP	STANDARD
SMFMV-3E	TRAILED TYPE / PTO (SHAFT)-ELECTRIC	3	VERTICAL	5	35-50	195/65 R15	540	7,5 KW (380 V)	STANDARD
SMFMV-4	TRAILED TYPE / PTO (SHAFT)	4	VERTICAL	5	50-65	195/65 R15	540	50 HP	STANDARD
SMFMV-4E	TRAILED TYPE / PTO (SHAFT)-ELECTRIC	4	VERTICAL	5	50-65	195/65 R15	540	7,5 KW (380 V)	STANDARD
SMFMV-6	TRAILED TYPE / PTO (SHAFT)	6	VERTICAL	6	65-70	10.0/75-15.3	540	65 HP	STANDARD
SMFMV-8	TRAILED TYPE / PTO (SHAFT)	8	VERTICAL	6	75-90	10.0/75-15.3	540	75 HP	STANDARD



HORIZONTAL TYPE FEED MIXER



SMFMH-6D



SMFMH-8D



SMFMH-6D



SMFMH-6



SMFMH-4



GENERAL FEATURES

This machine is essential for dairy and livestock breeders, it easily provides the required shredding of stalks, alfalfa, oats, grass, bale packages in a short time and without forcing the tractor, it is suitable for both large and small-scale livestock breeders. When silage, beet pulp are added, you will obtain a perfect homogeneous mixture.

TECHNICAL DETAILS

CODE	CAPACITY (M3)	TYPE OF AUGER	NUMBER OF AUGER	NUMBER OF BLADE	TYRE SIZE	REQUIRED POWER
SMFMH-2,5	2,5	HORIZONTAL TYPE SINGLE AUGER	1 (+2 SHORT)	51	65/80 R13	25 HP
SMFMH-4	4	HORIZONTAL TYPE SINGLE AUGER	1 (+2 SHORT)	42+14	10.0X80 R12	30 HP
SMFMH-6	6	HORIZONTAL TYPE SINGLE AUGER	1 (+2 SHORT)	51+17	10.0X80 R12	40 HP
SMFMH-9	9	HORIZONTAL TYPE SINGLE AUGER	1 (+2 SHORT)	53+14	400X60 R15.5	55 HP
SMFMH-12	12	HORIZONTAL TYPE SINGLE AUGER	1 (+2 SHORT)	61+16	400X60 R15.5	60 HP
SMFMH-6D	6	HORIZONTAL TYPE DOUBLE AUGER	2	96	11.5/80 R15.3	40 HP
SMFMH-8D	8	HORIZONTAL TYPE DOUBLE AUGER	2	96	11.5/80 R15.3	50 HP
SMFMH-10D	10	HORIZONTAL TYPE DOUBLE AUGER	2	116	11.5/80 R15.3	60 HP
SMFMH-12D	12	HORIZONTAL TYPE DOUBLE AUGER	2	132	400X60 R15.5	70 HP



SOLID MANURE SPREADER



SMSMST-10



SMSMST-6



SMSMST-10



SMSMST-6

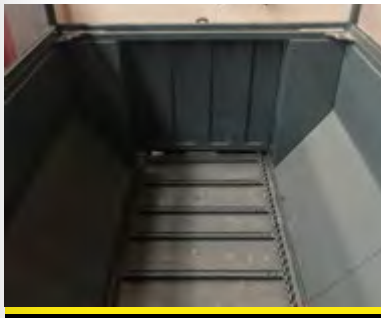
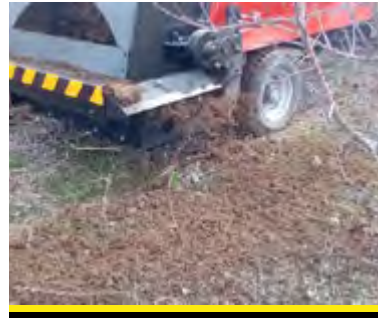


GENERAL FEATURES

Our Manure Spreader loads manure, and provides a uniform way of spreading it on the fields. When the machine is loaded, the specially designed suspension system on the chassis, prevents the tractor from the oscillations that will occur, and in this way it provides a more comfortable driving experience. Specially designed vertically positioned beaters, with the blade attached to them, provide a homogeneous spreading of the muck on the field. Also, the specially designed transmission system that allows the transfer, is designed to work without any problems and can also withstand high power capacity for many years.

TECHNICAL DETAILS

CODE	TYPE OF MACHINE	CAPACITY (M3)	CAPACITY (TON)	TYPE OF CONVEYOR	WORKING WIDTH (M)	TYPE OF AXLE	TYRE SIZE	PTO ROTATION (RPM)	REQUIRED POWER (HP)
SMSMST-4	GARDEN	4	5	CHAIN	15	SINGLE	10.0/75-15.3	540	40
SMSMST-6	FIELD	6	7	CHAIN	15	SINGLE	400/60-15,5	540	55
SMSMST-10	FIELD	10	12	CHAIN	15	DOUBLE (TANDEM)	400/60-15,5	540	75



SLURRY TANKER



SMST-15



SMST-15



SMST-10



SMST-5



GENERAL FEATURES

Slurry tankers are designed to suck slurry from the lagoons and homogeneously spread on fields. Special low height design, floatation tyres and strong chassis are some of the features of slurry tankers. These features allow users to operate on all kind of terrain, store the machine inside low height buildings and maintain the machine easily. Slurry tankers have strong Italian pumps that allow users to operate faster and spread on a wider area. There are indicators to follow pressure and slurry level, over pressure and low pressure valves and overfilling protection on the machine. With these indicators and safety systems, operators are able to work with full control without damaging the machine.

TECHNICAL DETAILS

CODE	TYPE OF AXLE	CAPACITY (TON)	PUMP TYPE	TYRE	PTO ROTATION (RPM)	DISTRIBUTOR TYPE
SMST-5	SINGLE AXLE	5	OIL PALLET	500x50x17	540	HITTING THE PLATE
SMST-10	DOUBLE AXLE	10	OIL PALLET	500x50x17	540	HITTING THE PLATE
SMST-15	DOUBLE AXLE	15	OIL PALLET	500x50x17	540	HITTING THE PLATE
SMST-20	DOUBLE AXLE	20	OIL PALLET	600X50X22,5	540	HITTING THE PLATE



COMPOST MIXER



SMCM-1



SMCM-1



GENERAL FEATURES

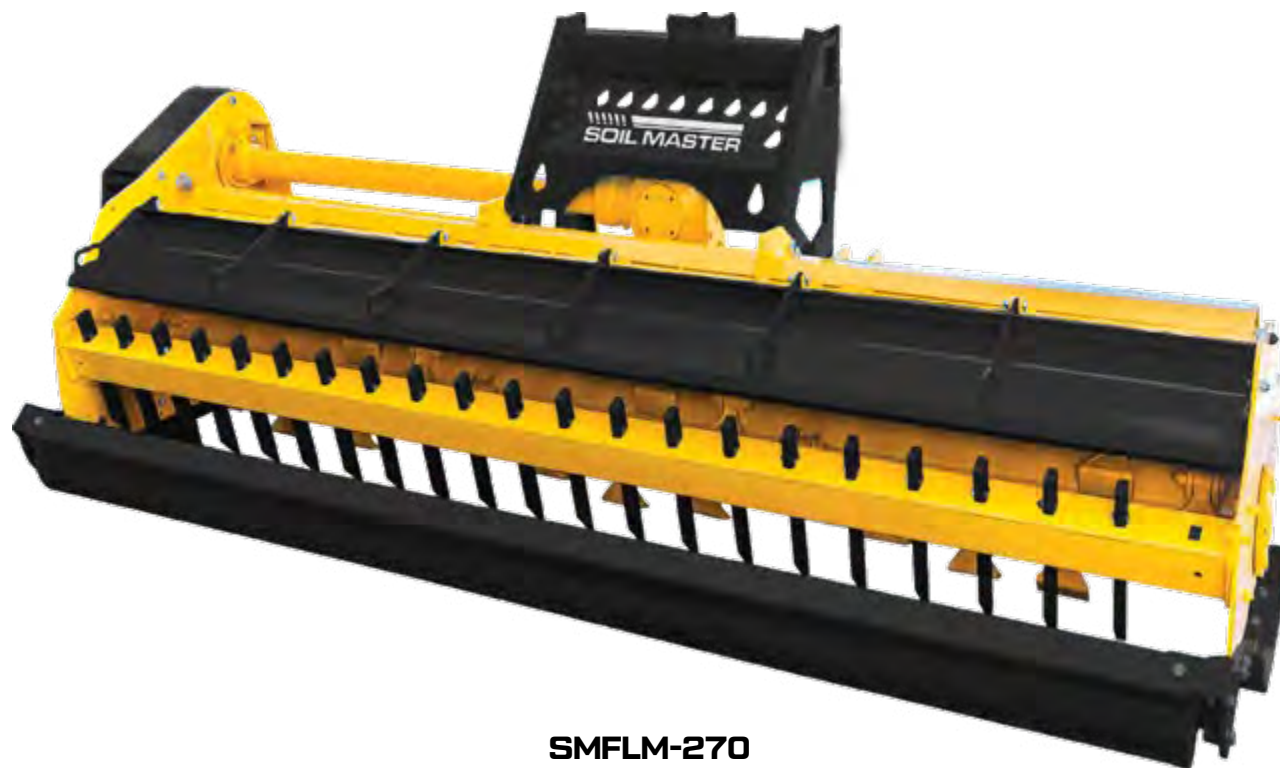
Compost Mixing Machine is a specially designed machine to speed up the composting process of farm grains and all kinds of organic waste. The machine turns organic wastes into barrels and ventilates them, so that they ferment faster by balancing C / N (Carbon / Nitrogen) ratio. Farm grains and organic wastes that do not have tangible value gain value. Special height adjustable axle for work on all types of ground High-strength blades are designed and positioned for optimum mixing. Spray Nozzles and compact pump are available to compensate for compost moisture. Foldable mixing units designed for ease of transport and space occupation are available.

TECHNICAL DETAILS

CODE	WORKING WIDTH (CM)	IMPROVEMENT SPEED	CAPACITY (M3/H)	WEIGHT (KG)	REQUIRED POWER (HP)
SMCM-1	300	0,5	1000	7000	90



FLAIL MOWER (MULCHER)



SMFLM-270



SMFLM-210H



SMFLM-210H



SMFLM-300



SMFLM-300



SMFLM-210H

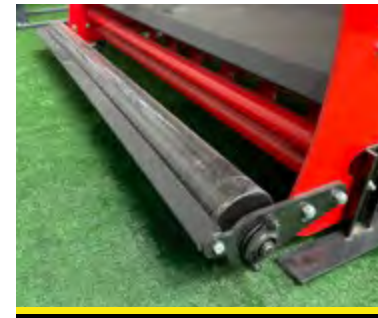


GENERAL FEATURES

It is an equipment which enables us to recycle fertilizers and to give the organic items that we gained from the soil back to the soil by shredding any plant residues on the soil (wheat, sunflower, corn, cotton stalks, pruned tree branches) and similar plant residues. Thus the need for fertilizers will decline. It is an equipment that takes the movement from the tail shaft, which is connected with a three-point suspension mechanism. It is an important equipment used in agriculture and thanks to its slides and the roller behind it, it can protect the crushing and balancing damage due to the fact that it can work without touching the uneven ground despite the surface defects in the soil.

TECHNICAL DETAILS

CODE	WORKING WIDTH (CM)	TYPE OF CHASSIS	WEIGHT (KG)	REQUIRED POWER (HP)
SMFLM-160	160	FIXED	610	35-40
SMFLM-180	180	FIXED	625	45-50
SMFLM-210	210	FIXED	690	45-55
SMFLM-250	250	FIXED	860	60-65
SMFLM-270	270	FIXED	960	65-70
SMFLM-300	300	FIXED	1030	70-75
SMFLM-350	350	FIXED	1130	75-80
SMFLM-160H	160	HYDRAULIC SLIDE	550	35-40
SMFLM-180H	175	HYDRAULIC SLIDE	647	45-50
SMFLM-180DH	175	HYDRAULIC SLIDE / DOUBLE WAY TRACTOR CONNECTION	700	45-55
SMFLM-210H	200	HYDRAULIC SLIDE	697	50-55
SMFLM-210DH	200	HYDRAULIC SLIDE / DOUBLE WAY TRACTOR CONNECTION	730	55-60
SMFLM-250H	250	HYDRAULIC SLIDE	870	60-65
SMFLM-270H	270	HYDRAULIC SLIDE	950	65-70



SHAFTED AND BAGGED MULTI PURPOSE THRESHER



SMMPT



SMMPT



SMMPT



GENERAL FEATURES

Sack threshing machine with shaft, pulls the seed out of the spike and sheath, and breaks the stalk into straw. It also separates grain from straw and foreign materials with the aid of an aspirator. Apart from wheat, barley, rye, oats and other cereal varieties, with additional belt-pulley system and sieve variants chickpeas, beans, lentils, sorghum and similar plants can be blended by this machine. The grain is taken from the side and filled into the sack with the spiral system. chickpea and lentil grain rate is 0.001.

TECHNICAL DETAILS

CODE	TYPE OF MACHINE	BEATER WIDTH (MM)	NUMBER OF BEATER KNIFE	DIAMETER OF BEATER SIEVE (MM)	WEIGHT (KG)	TYRE SIZE	REQUIRED POWER (HP)
SMMPT	SHAFTED AND BAGGED	1200	44	12-14-22	1430	600X16	48



SOIL MASTER
AGRICULTURAL MACHINERY

HEAD OFFICE

Add: Fevzi Cakmak Mh. 10758 Sk. No: 16/G
42050 Karatay/Konya/TURKEY

T: +90 332 290 00 20
F: +90 332 290 00 19

FACTORY

Add: Büyükkayacık Osb, Yaylacık Cd. No:
23, 42250 Selcuklu/Konya/TURKEY

T: +90 332 239 18 85
T: +90 332 239 18 86
F: +90 332 239 18 87

www.soilmaster.com.tr



+90 (532) 137 01 74



info@soilmaster.com.tr



SOILMASTER AGRICULTURAL MACHINERY



For detailed information about
our products, you can scan the
QR code by your device.